



EXPERIENCE IT YOURSELF.

ILLINOIS HIGH-SPEED RAIL

CHICAGO TO ST. LOUIS

T.H.E. Conference

February 23, 2016



www.idothesr.org
www.illinoisrail.org

**Chicago
to St. Louis
Corridor
with 9 stops
in between**



**Current
Improvements**
Between Joliet &
East St. Louis

13 Counties

Cook, DuPage, Will, Grundy, Livingston,
McLean, Logan, Sangamon, Macoupin, Jersey,
Madison, St. Clair, and St. Louis

Chicago-St. Louis HSR History

EXPERIENCE IT YOURSELF.

1890's

Illinois has been looking at this corridor for high-speed service

ONE HUNDRED MILES AN HOUR!

An Electric Railway to Be at Once Constructed
Between St. Louis and Chicago.

The Distance of Two Hundred and Fifty Miles to Be Covered in Two
and One-Half Hours.

Names of the Promoters of the Enterprise and a Full Description of the Marvellous Line and its
Equipment—The Power Station Located at Cilgton, Ill.

Since 1980's

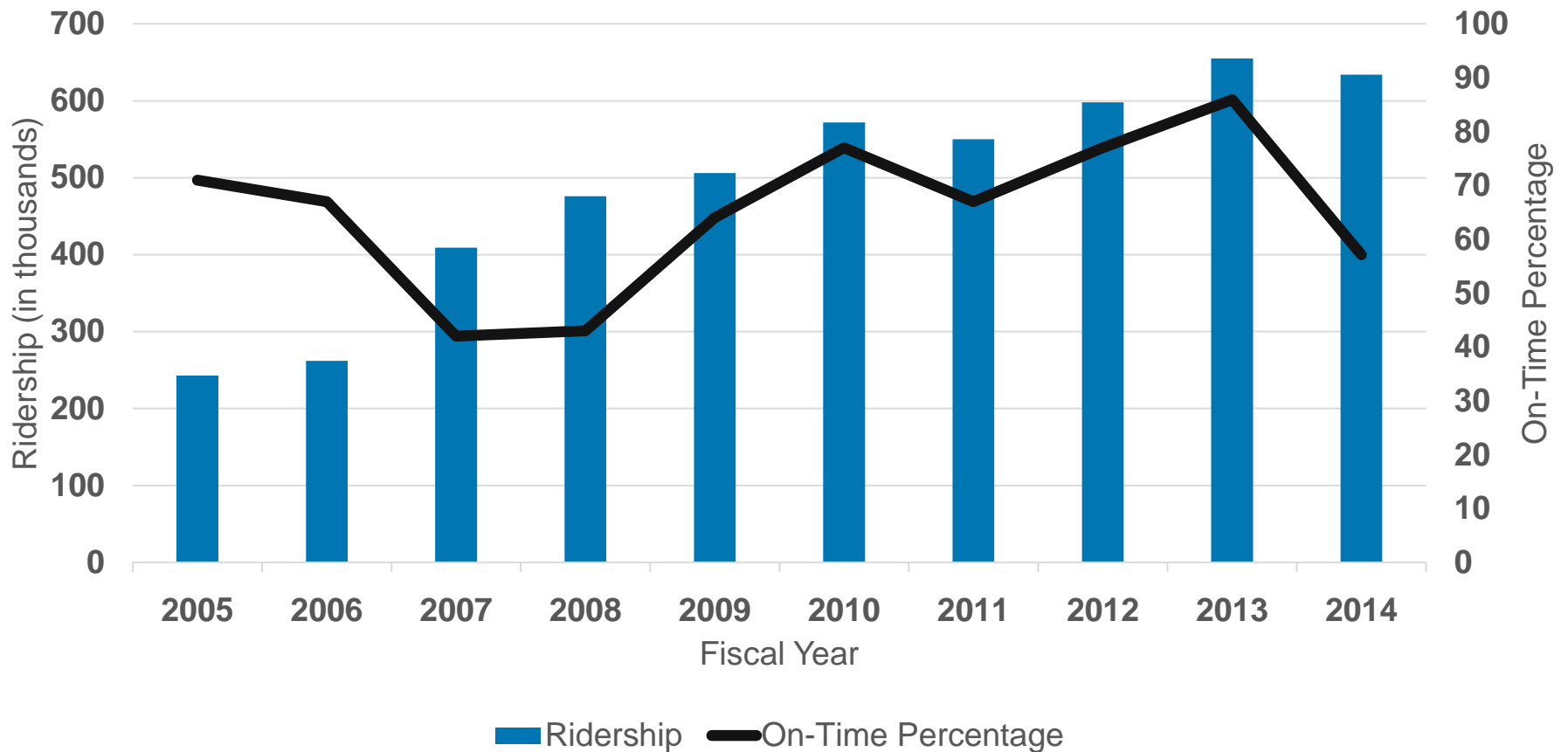
IDOT has been looking at this corridor for high-speed service

EIS Completed

Record of Decision
received in 2004

Ridership continues to grow

Chicago - St. Louis Ridership & Reliability



High-Speed Rail Program Schedule

EXPERIENCE IT YOURSELF.

2010-2012

- Track reconstruction and upgrades

2012

- Procurement process for new high-speed rail cars
- Operation of trains up to 110 mph between Dwight and Pontiac

2013

- Procurement process for new high-speed rail locomotives

2015-2017

- Infrastructure in place to operate at speeds up to 110 mph
- Springfield Third St. improvements
- Delivery of the new cars and new locomotives

Current Program Budget: \$1.95 Billion

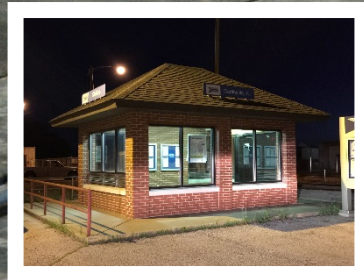
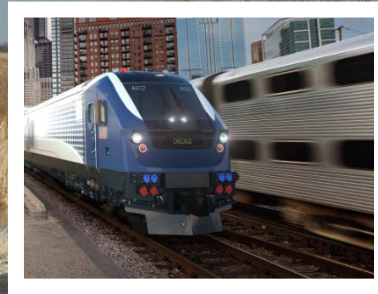
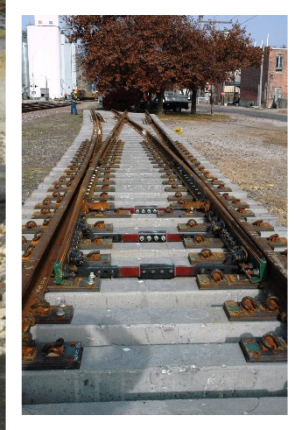
EXPERIENCE IT YOURSELF.

> Track & Structures	\$637 Million	33%
> Grade Crossings, Fencing, OH Bridges	\$194 Million	10%
> Real Estate	\$40 Million	2%
> Stations	\$35 Million	2%
> Rolling Stock/Equipment	\$609 Million	31%
> Signal & Communications	\$205 Million	11%
> Professional Services	\$231 Million	12%
Total	\$1,951 Million	100%

Note: This summary does not include Tier 1 and Tier 2 EIS's, Joliet Multimodal, or other individual projects.

What Are We Building?

EXPERIENCE IT YOURSELF.

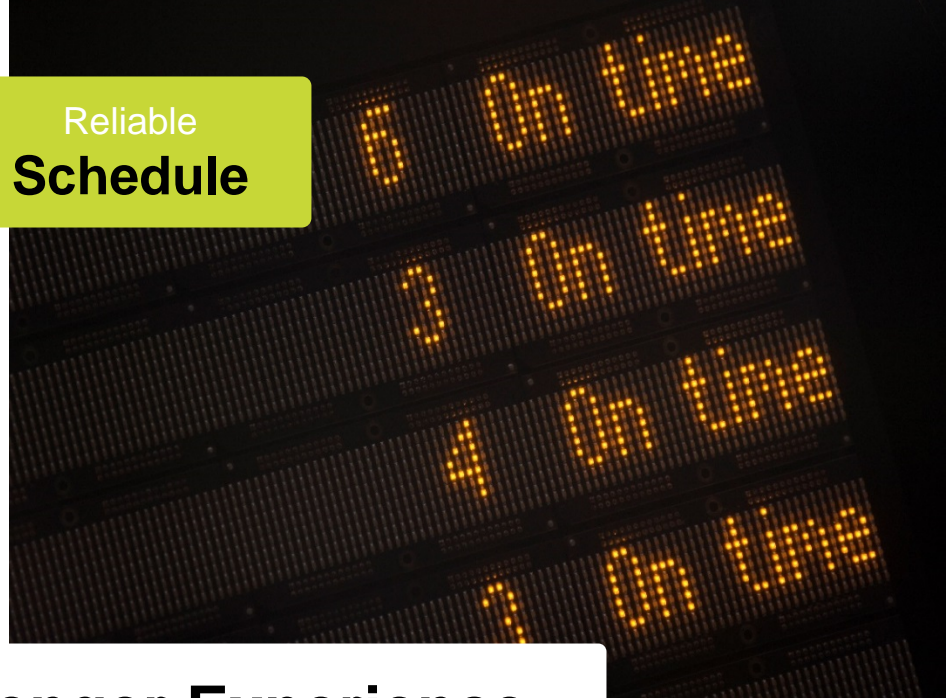


- 110 mph speed upgrades
- 262 miles of main track
- Realignment of curves
- New second tracks/sidings
- Grade crossings & warning devices
- Signaling
- Turnouts, culverts, bridges, fencing, etc.
- 6 new high-speed train sets
- 8 new/renovated stations



Passenger
Amenities

Reliable
Schedule



Improved Passenger Experience



New &
Upgraded
Stations

Reduced
Travel Time





New
Track & Ties



Fencing

Safety Improvements



4-Quadrant
Gates
•
Signal
System



Bridge
Improvements

Station Improvements



**ILLINOIS
HIGH-SPEED RAIL**
CHICAGO TO ST. LOUIS



Station Overview

EXPERIENCE IT YOURSELF.

Improved **Aesthetics**
with **new** and
renovated facilities

Platform Length = **500 feet**
(site permitting)

•
Platform Width = **12 feet**

•
Platform Height = **8 inches** ATR

New ADA compliant
boarding platforms

•
Increased passenger
safety, comfort
and **convenience**

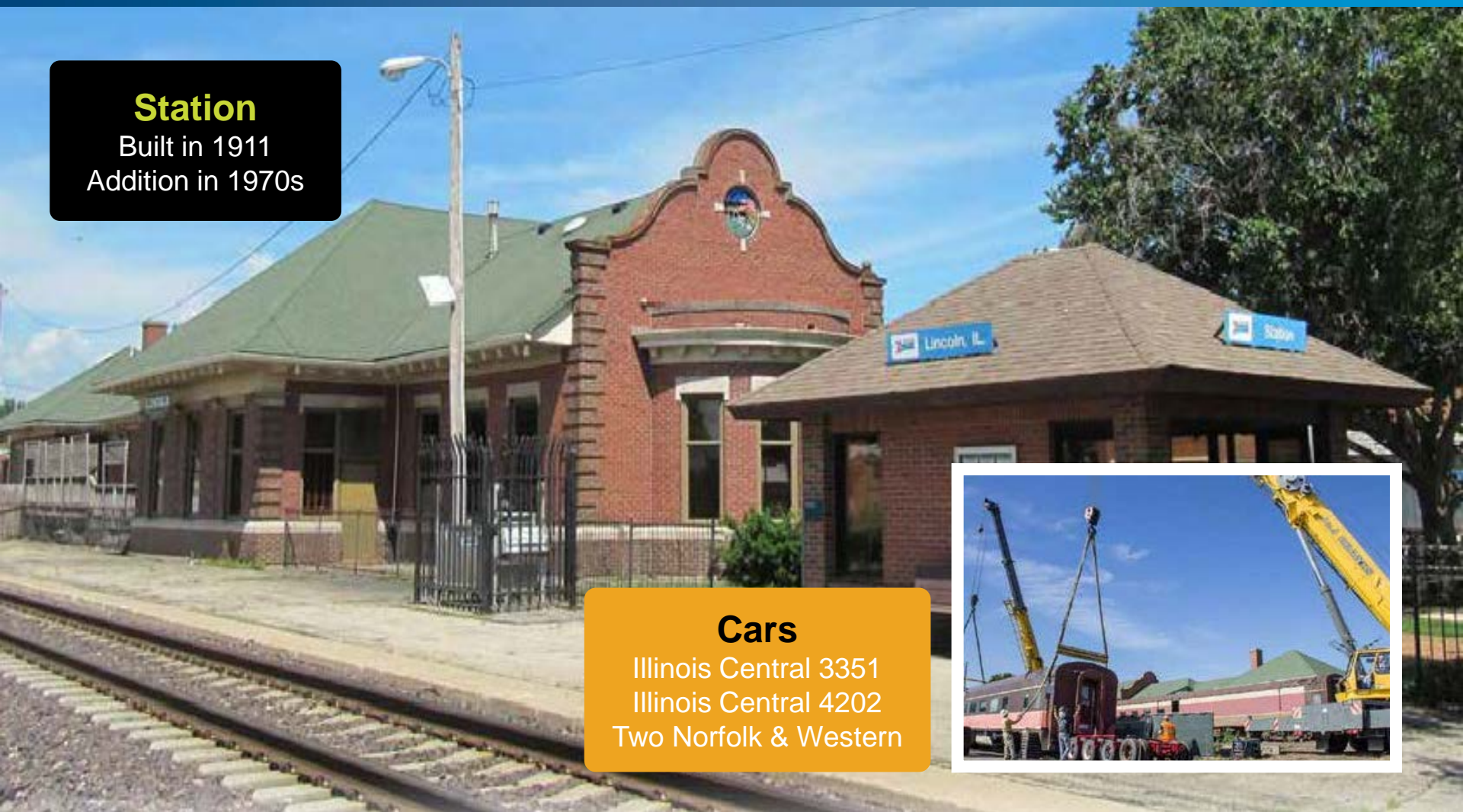
•
Lighting, site
and **parking**
improvements

•
Generate **additional**
ridership and
commercial
development
activity

Lincoln Station Rehab & Rail Car Preservation

EXPERIENCE IT YOURSELF.

Station
Built in 1911
Addition in 1970s

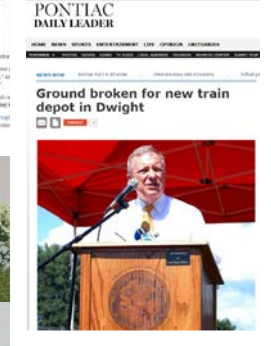


Cars
Illinois Central 3351
Illinois Central 4202
Two Norfolk & Western

Dwight Station

EXPERIENCE IT YOURSELF.

New Station
Construction
ongoing



Pontiac Station

EXPERIENCE IT YOURSELF.

New Station
Construction
anticipated to begin
Spring 2016



Program Accomplishments



**ILLINOIS
HIGH-SPEED RAIL**
CHICAGO TO ST. LOUIS



Construction Accomplishments

EXPERIENCE IT YOURSELF.

2.9 million linear feet of rail

•
721,000 concrete ties

•
1.65 million tons of stone ballast

•
Interim renewal of 225 crossing surfaces and approaches

•
Final renewal of 24 crossing surfaces and approaches

•
Installed 4 quadrant gate systems within 120 miles of corridor

•
Installed 74 turnouts



Construction Accomplishments

EXPERIENCE IT YOURSELF.



Crossing Safety Features



Public Operation of Higher-Speed Service between Dwight and Pontiac

Began
November 22, 2012

•
3 northbound trains
(300, 302, & 304)

•
3 southbound trains
(301, 305 & 307)

Equipment



**ILLINOIS
HIGH-SPEED RAIL**
CHICAGO TO ST. LOUIS



Equipment Procurement

EXPERIENCE IT YOURSELF.

Rail Car Procurement

Joint effort between
CA & IL
(IL representing
IA, MI & MO)

•
Awarded in November
2012 to Nippon
Sharyo, USA

Locomotive Procurement

Joint effort between
IL, CA, WA
(IL representing
MI, IA, MO & WI)

•
Initial order of 21
locomotives for the
Midwest states
awarded to Siemens
Rail Systems USA

•
Production underway
at the Siemens plant



Equipment Procurement

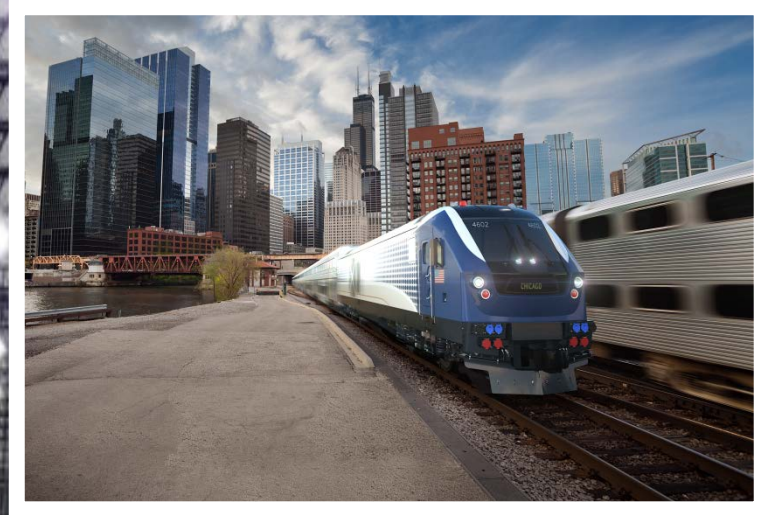
EXPERIENCE IT YOURSELF.

An additional order placed for **12 locomotives** for a **total of 33**

- **Maryland** has joined the procurement

- The Midwest States group has **reached an agreement** on equipment ownership and governance

- The locomotives will be tested **up to 110 mph** in Pueblo, Colorado and **up to 125 mph** in the Northeast Corridor



Next Steps – Current Construction



**ILLINOIS
HIGH-SPEED RAIL**
CHICAGO TO ST. LOUIS

Next Steps

EXPERIENCE IT YOURSELF.

- **24 miles** of new second track
- **Bridge** replacement & rehabilitation
- **Drainage** improvements
- **New signal system**
- Further improvements to **highway/rail grade crossings & signal improvements**

Significant construction throughout 2016

- **New locomotives start arriving in 2016**

Construction of this infrastructure is expected to be complete by 2017



Countdown to Completion

EXPERIENCE IT YOURSELF.

- » Dwight to East St. Louis: 492 days
 - 30 June 2017
- » Dwight to Joliet: 674 days
 - 31 December 2017



Planning/Environmental (NEPA) Full Build Out



**ILLINOIS
HIGH-SPEED RAIL**
CHICAGO TO ST. LOUIS



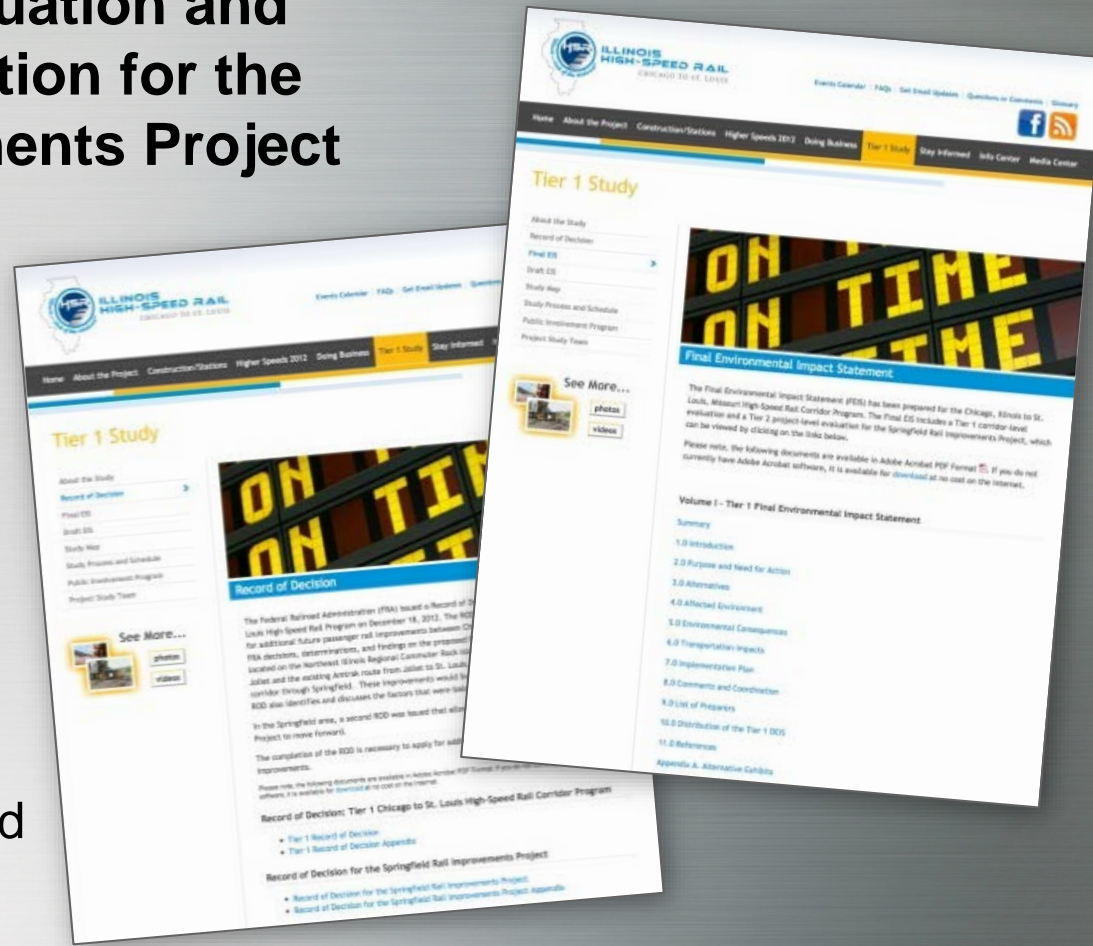
Planning for Future Full Build Out

EXPERIENCE IT YOURSELF.

Tier 1 Corridor-Level Evaluation and Tier 2 project-level evaluation for the Springfield Rail Improvements Project

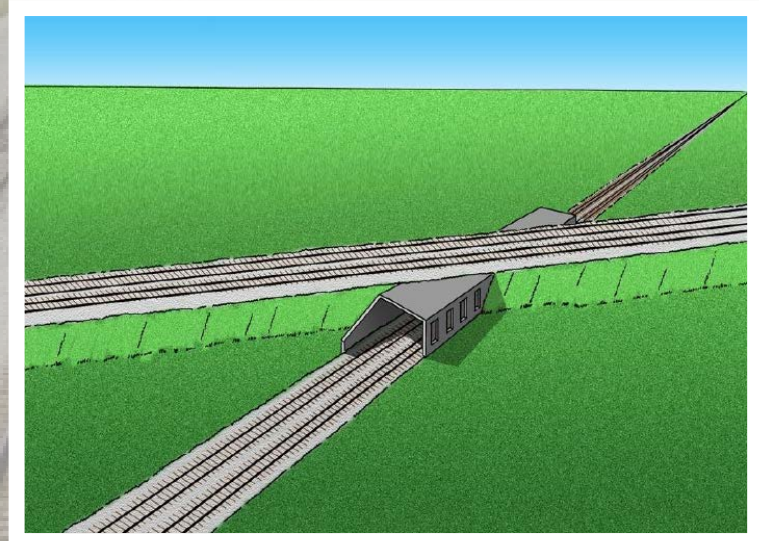
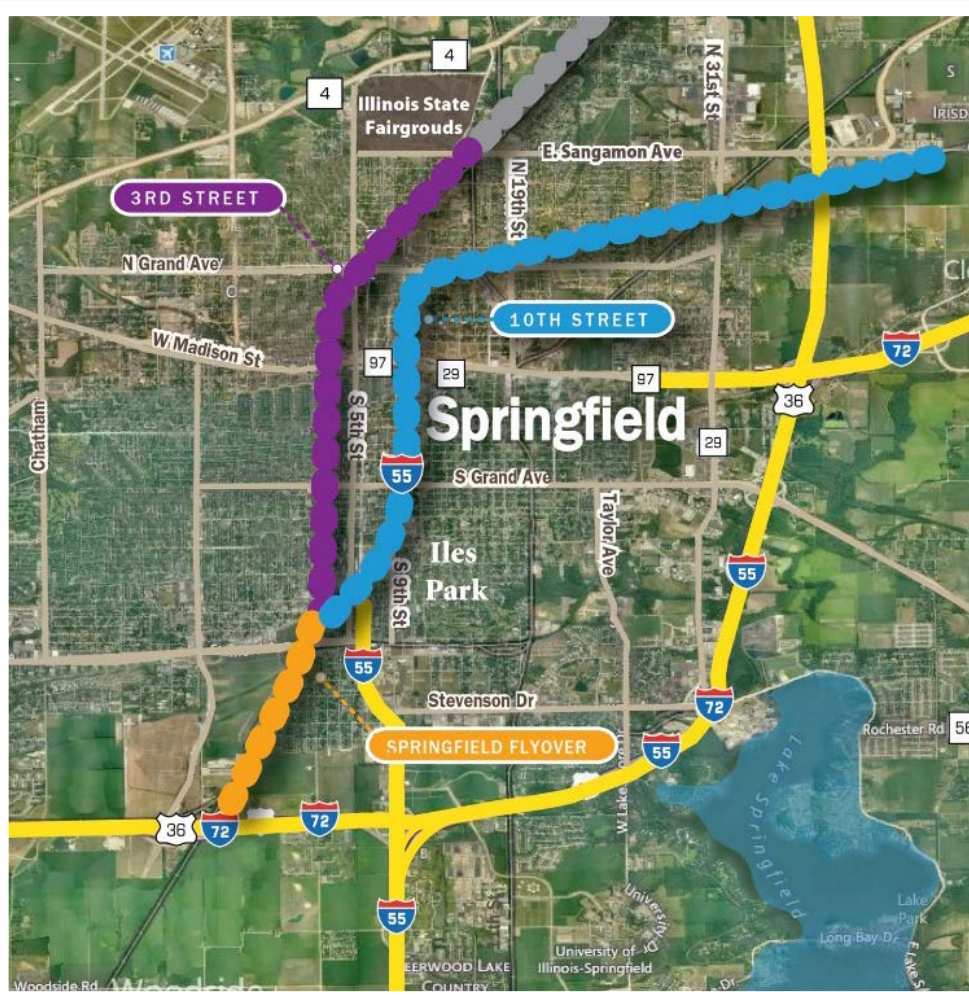
OCTOBER 2012 – Illinois Department of Transportation (IDOT) and Federal Railroad Administration (FRA) signed and issued the Tier 1 EIS for the full build-out

DECEMBER 2012 – Record of Decision for Tier I and Springfield Tier 2 issued by the FRA



NEPA – Springfield Flyover

EXPERIENCE IT YOURSELF.



Springfield – Full Build

EXPERIENCE IT YOURSELF.

Tier 2 NEPA complete
Selected **10th Street**
Preferred Alternative
in 2012

•
City of Springfield
is leading
10th Street work

*Design, construction & land
acquisition underway*

*Construction funding identified for
Carpenter Street underpass*

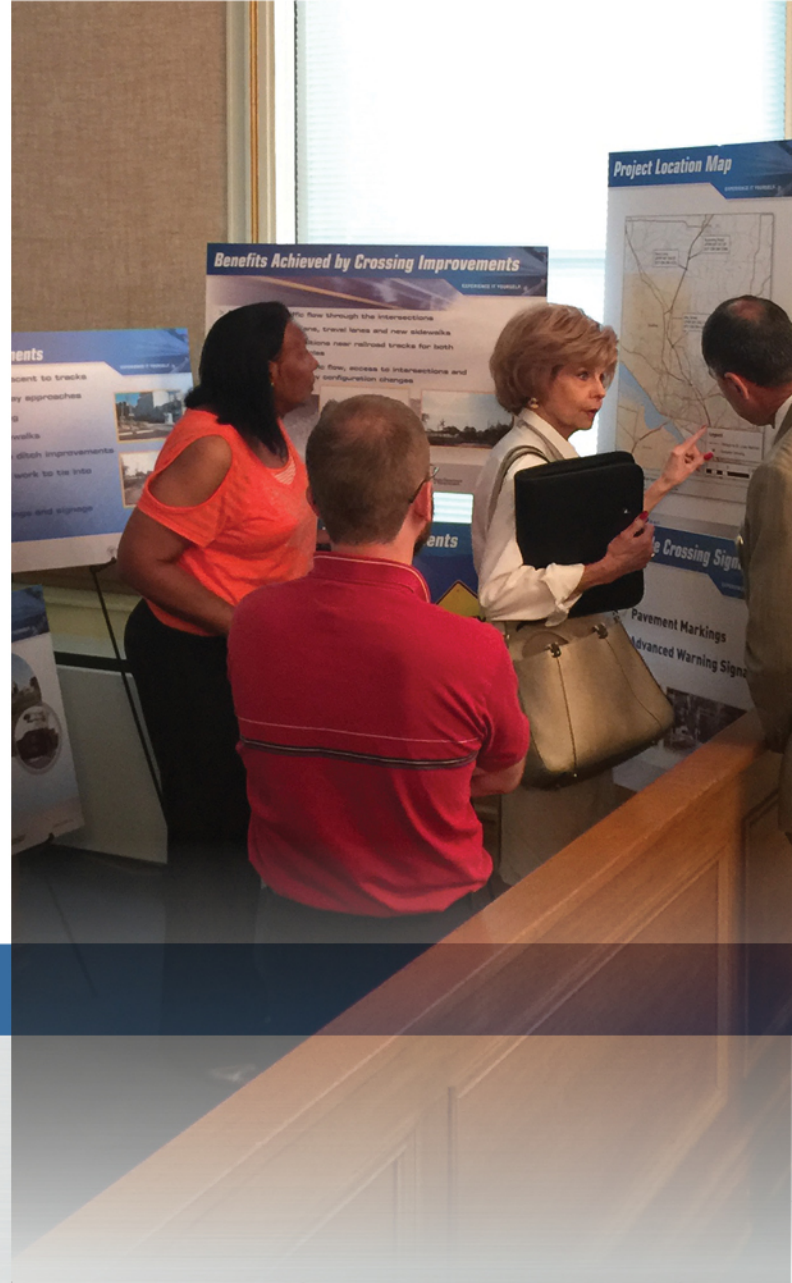
**When fully funded,
work will include:**

Consolidation
of all rail freight and
passenger traffic

•
Construction of
new grade
separations

•
New passenger
rail station

Public Involvement Opportunities



**ILLINOIS
HIGH-SPEED RAIL**
CHICAGO TO ST. LOUIS

Public Outreach

EXPERIENCE IT YOURSELF.

Held Over 230 Events

- Public Meetings
-
- Small Group Meetings
-
- Safety Briefings
-
- Festivals/Community Fairs
-
- Schools
-
- Sporting Events

Comments

Responded to over
1,300 comments

Social Media

YouTube Channel
Launched
November 2015



Public Involvement Opportunities

EXPERIENCE IT YOURSELF.



Stakeholder Meetings/Briefings

Public Meetings & Hearings

Stakeholder Outreach



Media Outreach



Small Group Meetings



Fact Sheets

Project Website
www.idothsr.org

Social Media
Facebook YouTube

Project Hotline
1-855-IDOT-HSR

Business Opportunities

EXPERIENCE IT YOURSELF.

The screenshot shows the 'Doing Business' section of the Illinois High-Speed Rail website. At the top left is the HSR logo with the text 'ILLINOIS HIGH-SPEED RAIL CHICAGO TO ST. LOUIS'. To the right are navigation links: 'Events Calendar | FAQs | Get Email Updates | Questions or Comments | Glossary' and social media icons for Facebook and RSS. A dark navigation bar contains links: 'Home | About the Project | Construction/Stations | Higher Speeds 2012 | Doing Business | Tier 1 Study | Stay Informed | Info Center | Media Center'. The main heading is 'Doing Business'. On the left is a sidebar with a 'Bidding Process' link and a list of categories: 'High-Speed Rail (HSR) Current Business Opportunities', 'Illinois Department of Transportation', 'Work 4 Illinois', 'Union Pacific', and 'Amtrak'. The main content area features a photo of a diverse group of professionals, some wearing hard hats. Below the photo is a blue header 'Bidding Process'. The text explains the bidding process for IDOT and UPRR, requiring prequalification. It also mentions opportunities for minority-owned and women-owned companies through IDOT's Disadvantaged Business Enterprises program. A numbered list outlines the current business opportunities process: 1. Prime contractors have 30 days to become prequalified (Prequalification Notices). 2. After 30 days, prequalified contractor information is available on the HSR Current Business Opportunities page. 3. Once information is available, subcontractors/DBEs can contact prequalified prime contractors for bidding opportunities. Contact information for the Illinois Department of Transportation Office of Business & Workforce Diversity is provided at the bottom left.

Visit the **Doing Business** section of www.idothesr.org

Visit the Program Website:

www.idothsr.org

Visit the Facebook Page:

www.facebook.com/illinoishighspeedrail



Call the Program Hotline:

1-855-IDOT-HSR (436-8477)

Questions?



**ILLINOIS
HIGH-SPEED RAIL**
CHICAGO TO ST. LOUIS

Thank you!



**ILLINOIS
HIGH-SPEED RAIL**
CHICAGO TO ST. LOUIS

