

Highway User Fee Funding Of Local Roads in Illinois

**T.H.E. Conference
University of Illinois
February 27, 2018**

**Craig Fink, County Engineer
Tazewell County, Illinois**

Public Roads in Illinois

Local Jurisdiction (Local Roads)

- **County Highways**
- **Township/Road District Roads**
- **Municipal Streets**

State Jurisdiction (IDOT)

- **State Highways**
- **US Highways**
- **Interstates**

User Fees Collected by State

(A Portion Returned to Roads)

Motor Fuel Tax (MFT)

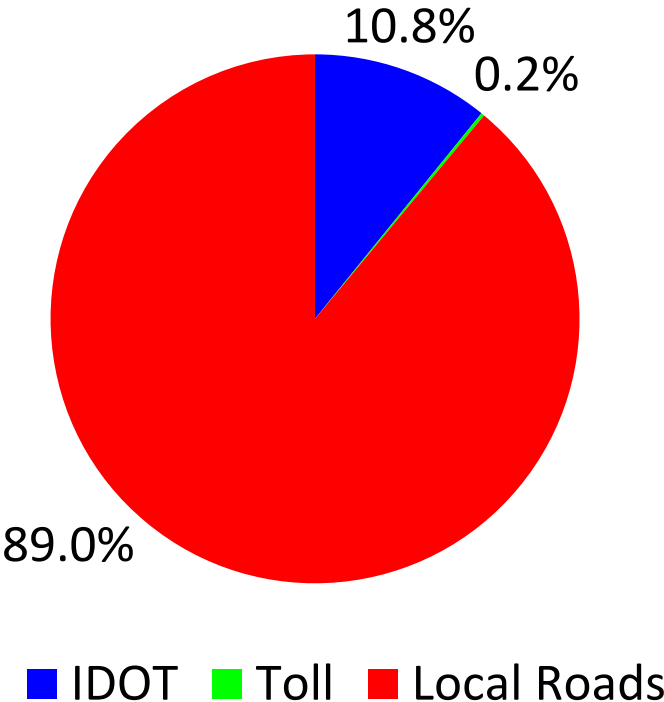
- **Paid at the Pump**

Motor Vehicle Revenue (MVR)

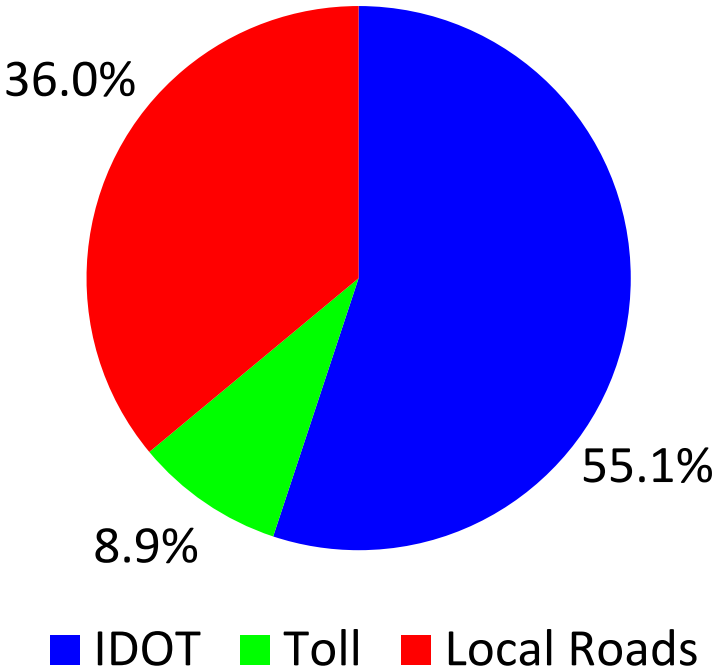
- **Paid at Secretary of State**
 - **Vehicle Registration**
 - **Driver's License**
 - **Certificates of Title**

Illinois Highway & Street Facts 2016

Miles of Public Road



Vehicle Miles of Travel



Highway User Fees Collected by State

(A Portion Returned to Roads)

Motor Fuel Tax (MFT)

- Paid at the Pump

Motor Vehicle Revenue (MVR)

- Paid at Secretary of State
 - Vehicle Registration
 - Driver's License
 - Certificates of Title

VERY IMPORTANT POINT TO BE MADE.

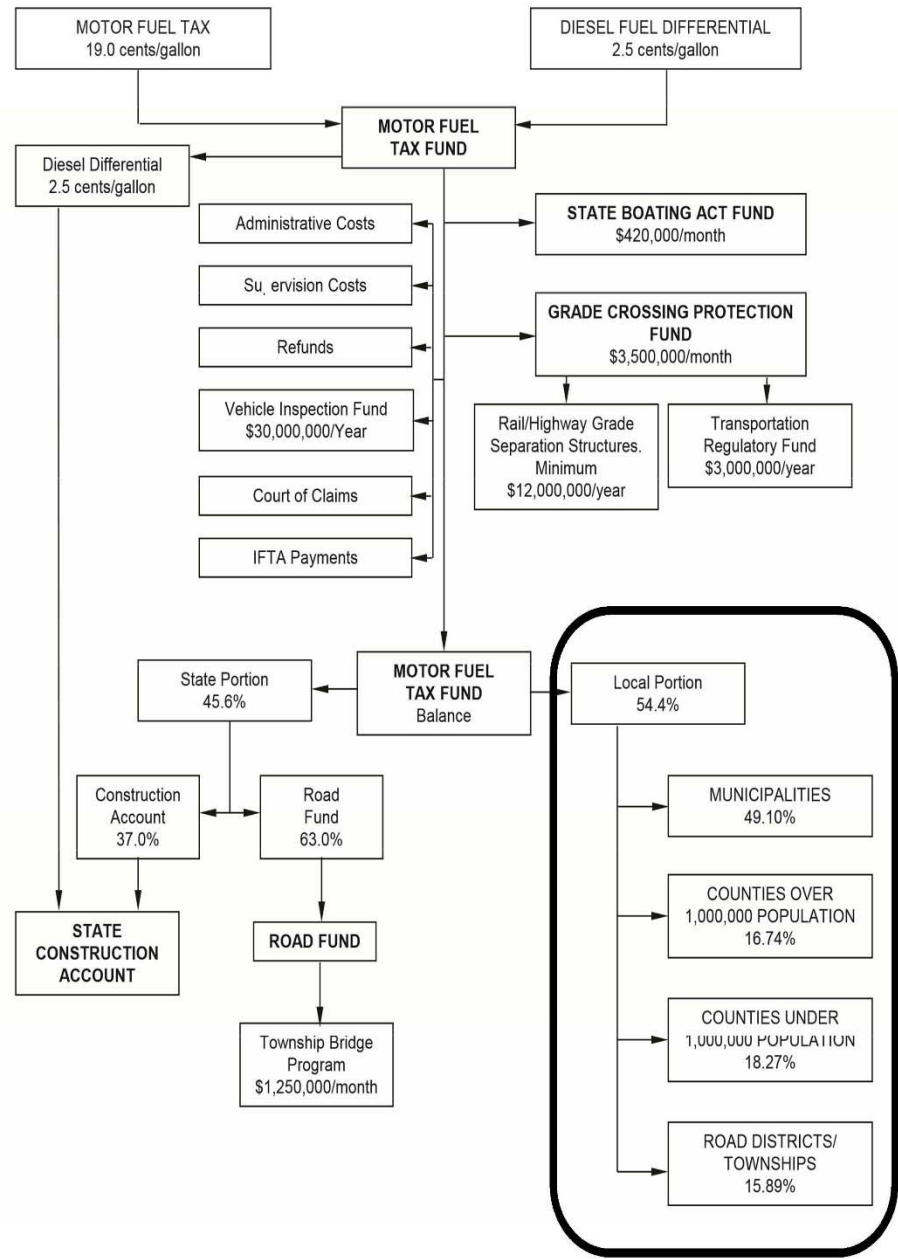
Local Roads share directly in the revenue stream of MFT but they do NOT share directly in the MVR revenue stream.

In other words,

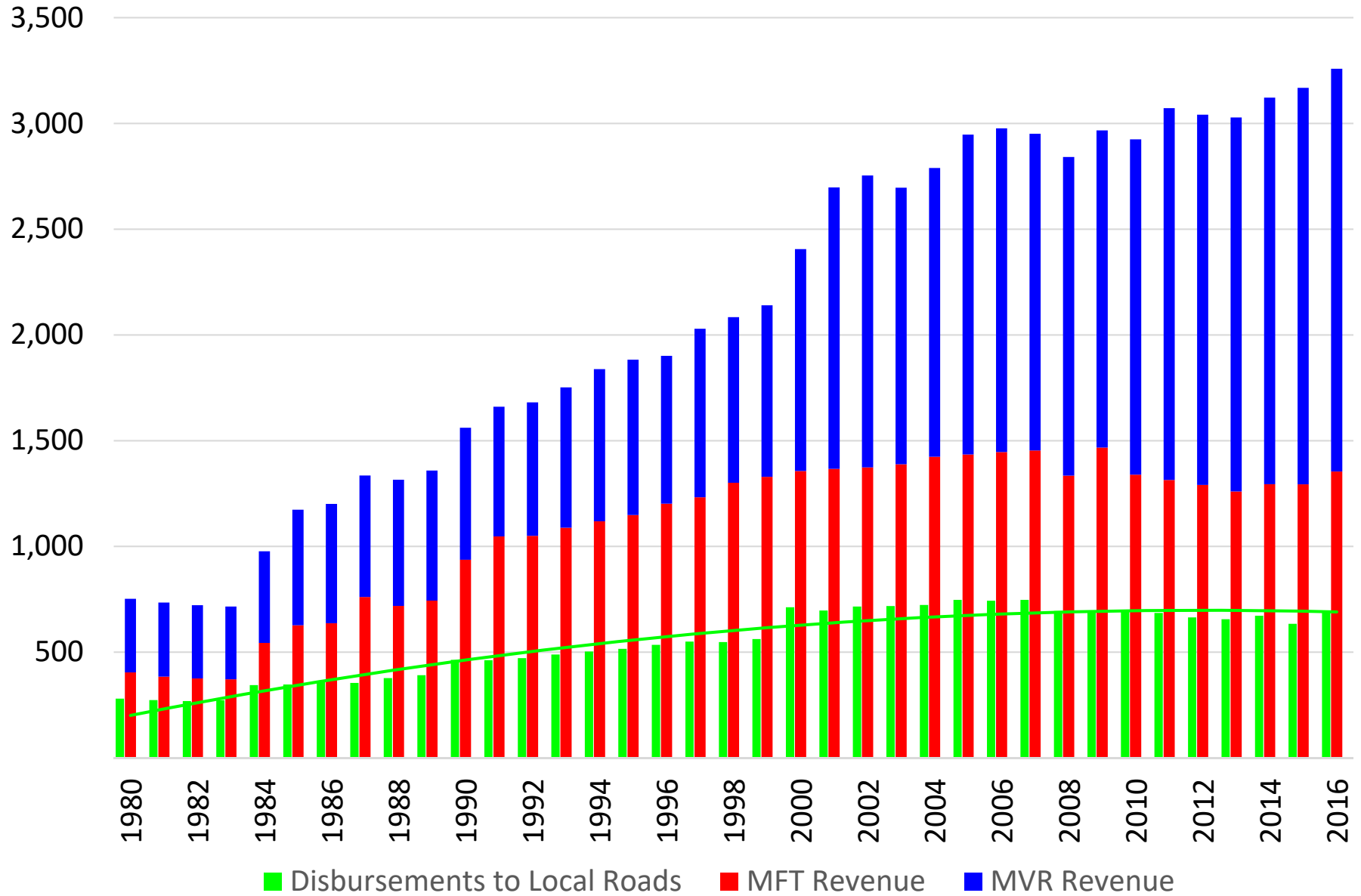
**if the MFT revenue collected by the State increases,
Local Roads share of that revenue
automatically increases proportionally.**

**If the MVR revenue collected by the State increases,
Local Roads receive none of that increase.**

DISTRIBUTION OF THE ILLINOIS MOTOR FUEL TAX FUND

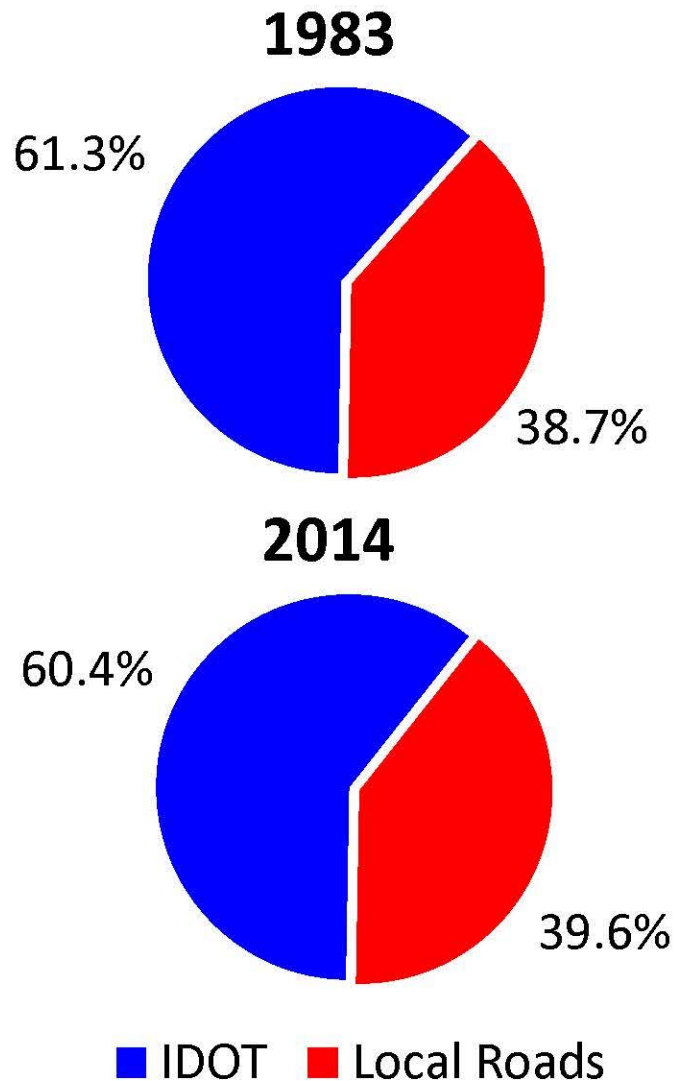


State Collected Highway User Fees [\$ Millions]

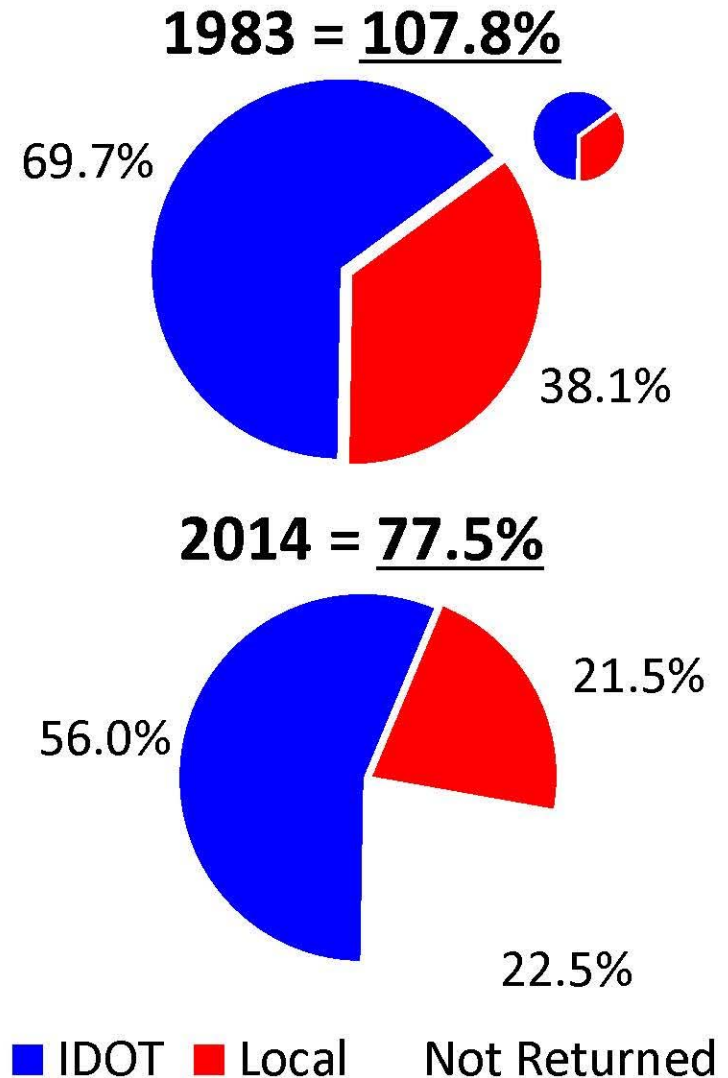


Contribution vs Share of Revenue Stream

Traffic Carried (VMT)

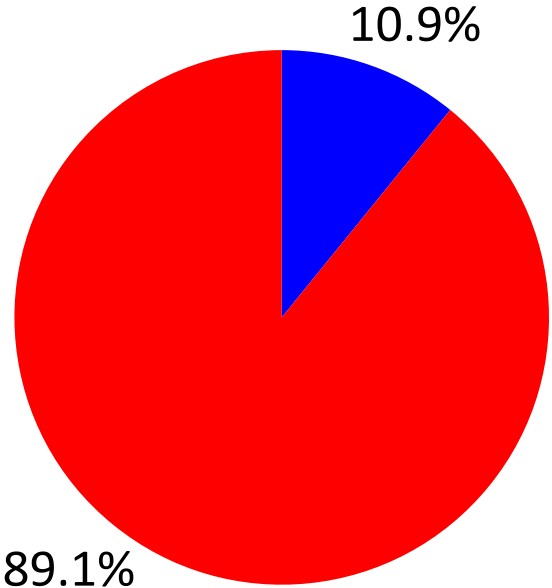


MFT and MVR Returned To:



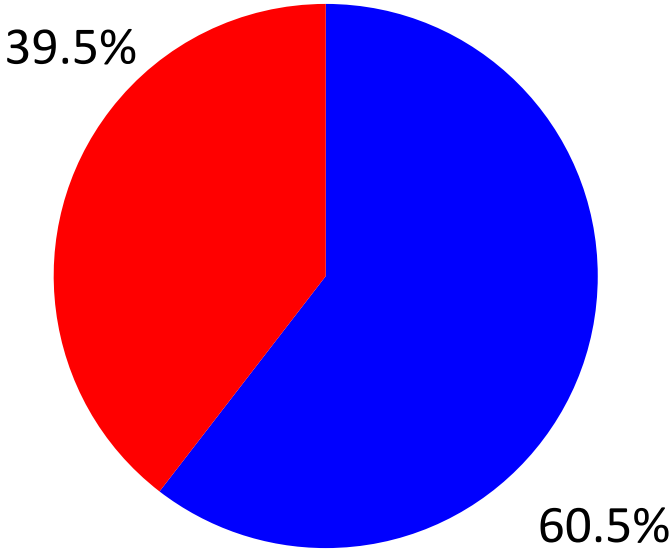
Contribution vs Share of Revenue 2016

Miles of Public Road



■ IDOT ■ Local Roads

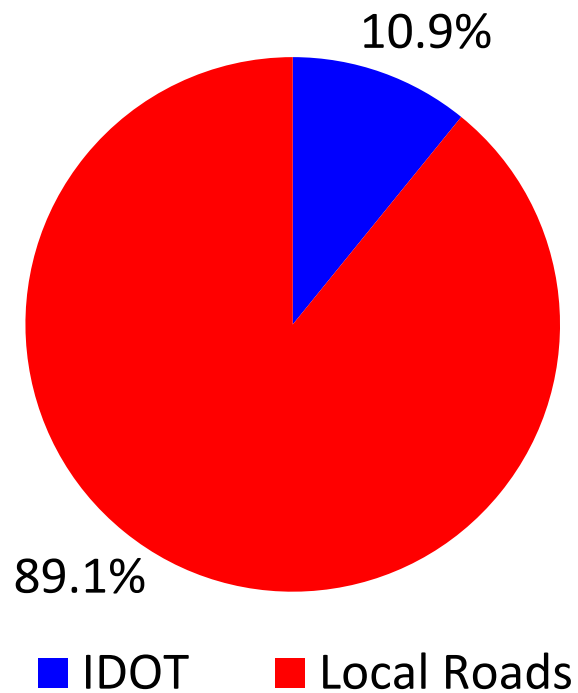
Vehicle Miles of Travel



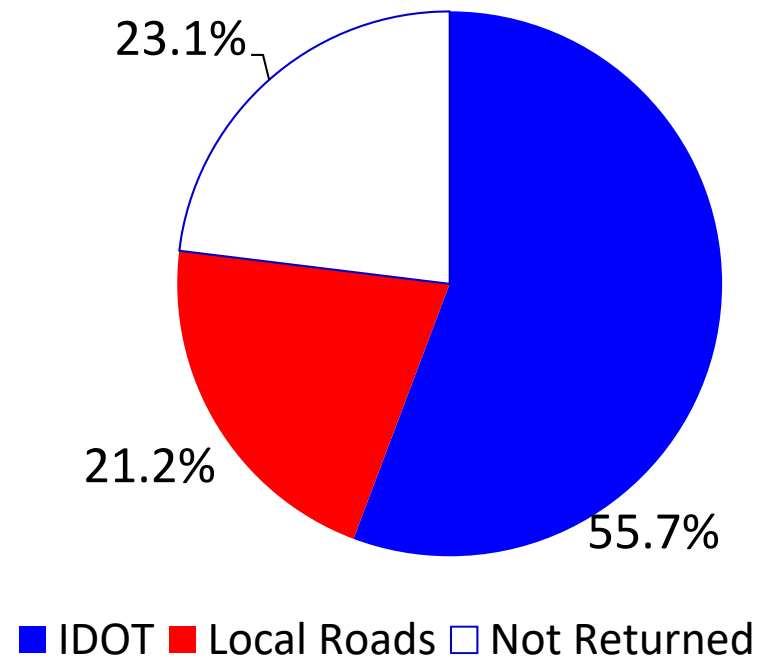
■ IDOT ■ Local Roads

Contribution vs Share of Revenue 2016

Miles of Public Road

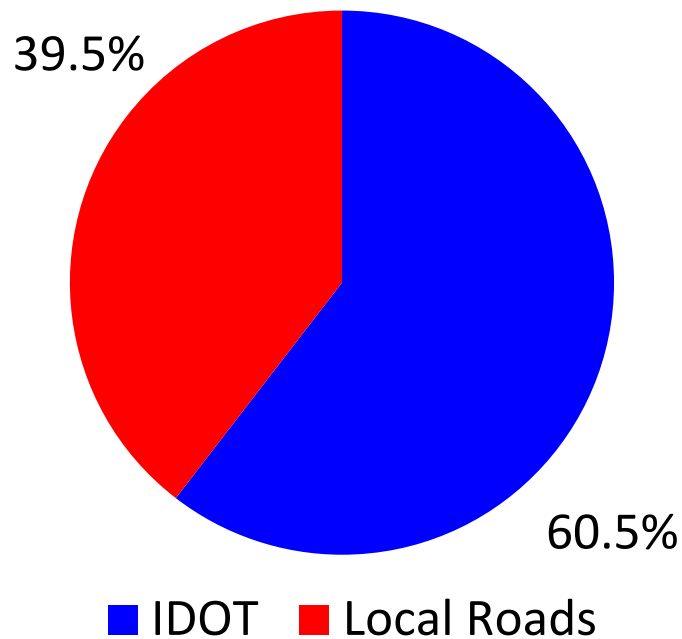


Share of MFT and MVR Returned to Roads

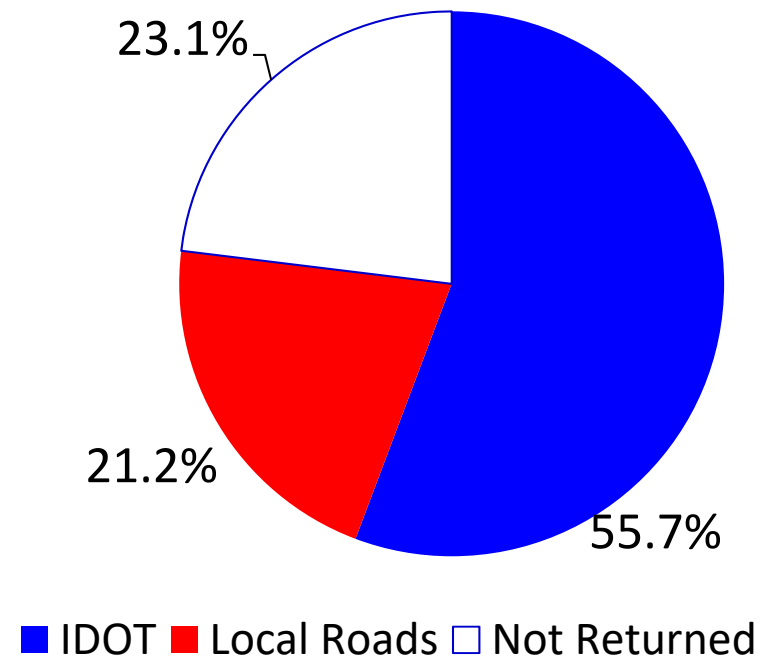


Contribution vs Share of Revenue 2016

Vehicle Miles of Travel



Share of MFT and MVR Returned to Roads



SO,

Local Roads:

- **Carry 40% of the statewide traffic**
- **Generate 40% of the Highway User Fees Collected by the State**
- **Receive back only 21.2% of those fees**

That's 53¢ for every \$1 generated!

HOW BIG AN IMPACT IS THAT?

In 2016 Local Roads . . .

. . . generated \$1,303 Million.

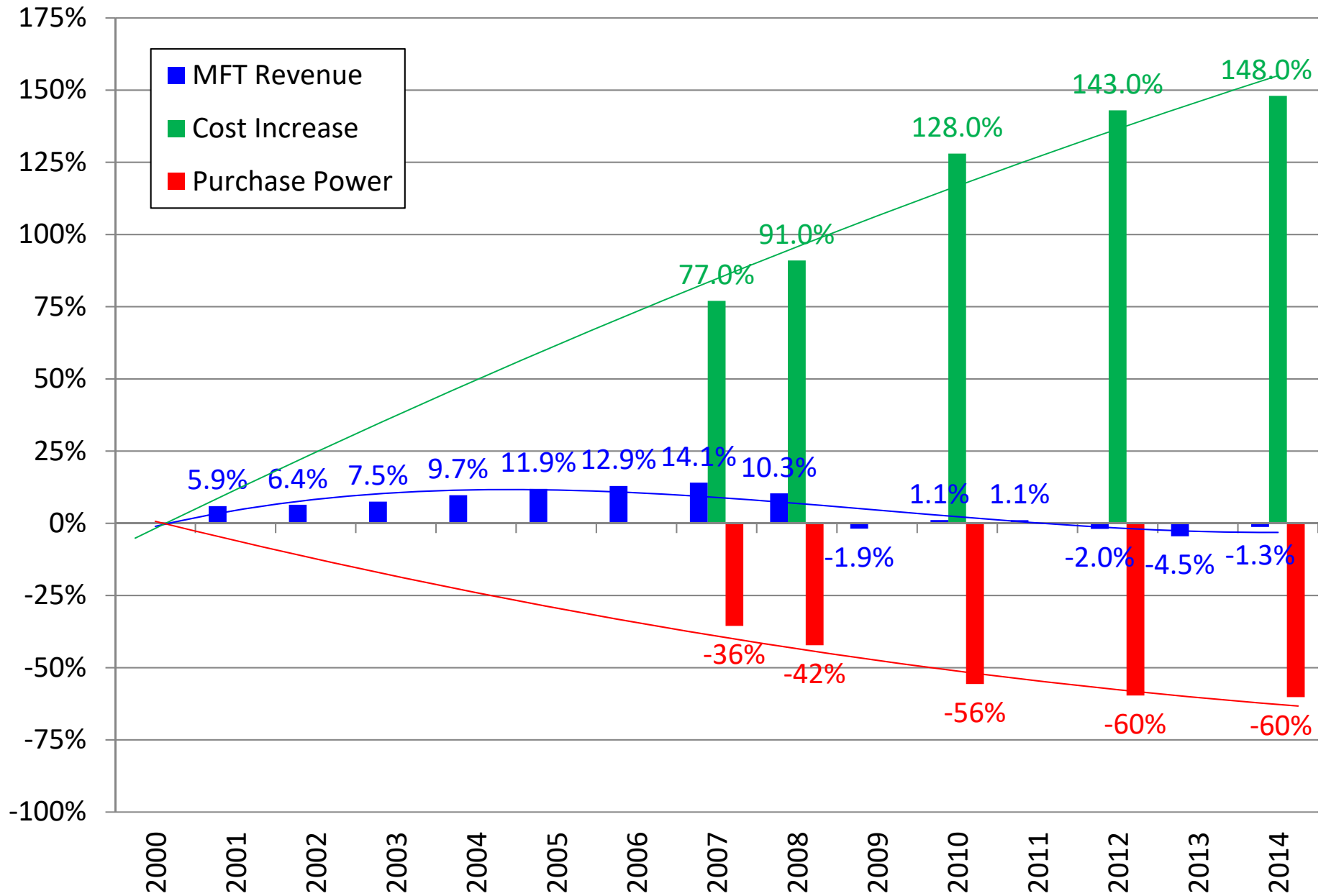
. . . received back \$691 Million. (\$575 Million in MFT distributions)

In effect, that is a

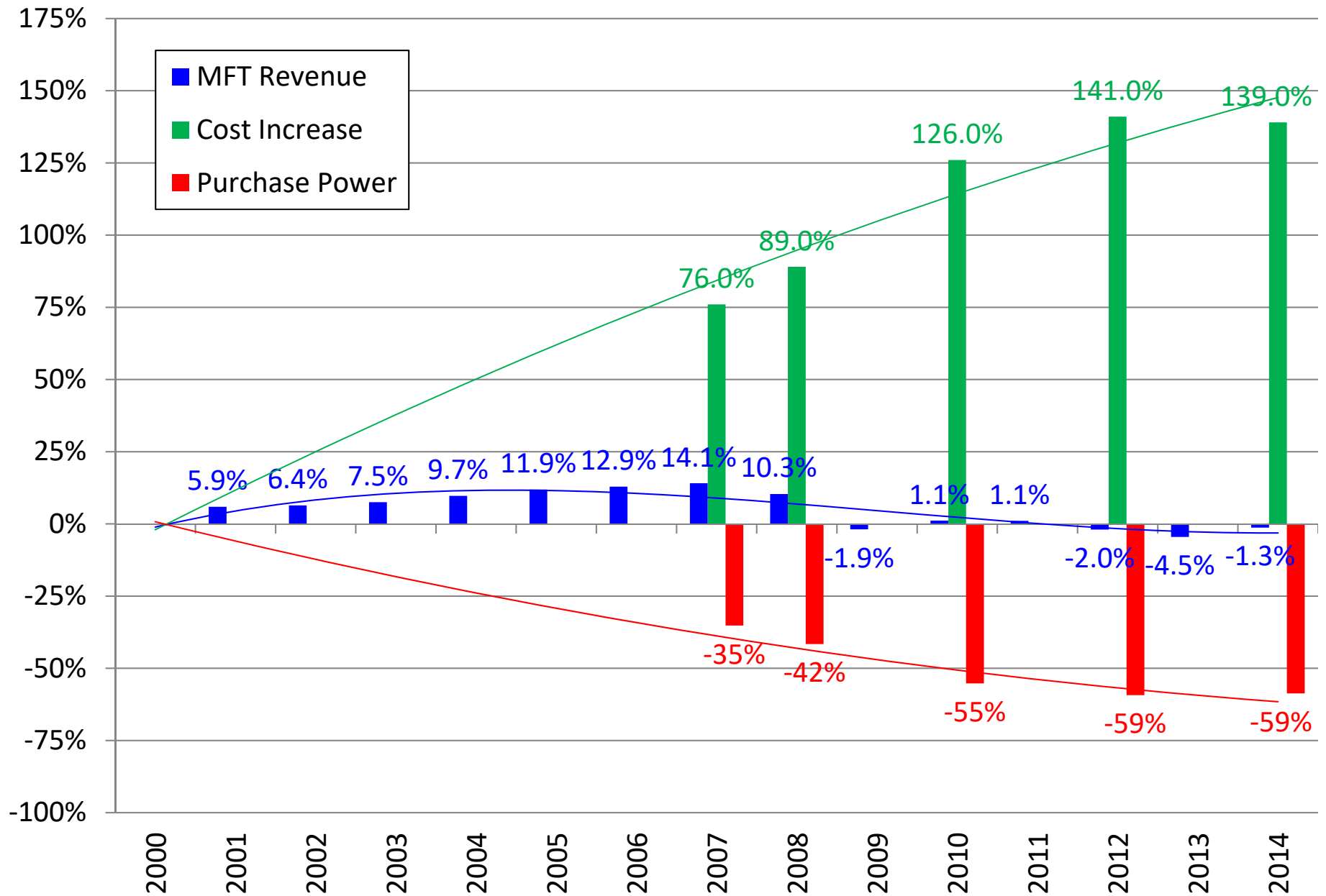
\$612 Million unfunded mandate!

(\$11.1 Billion Since 1983)

MFT Revenue/Costs vs. Purchase Power Counties in Illinois



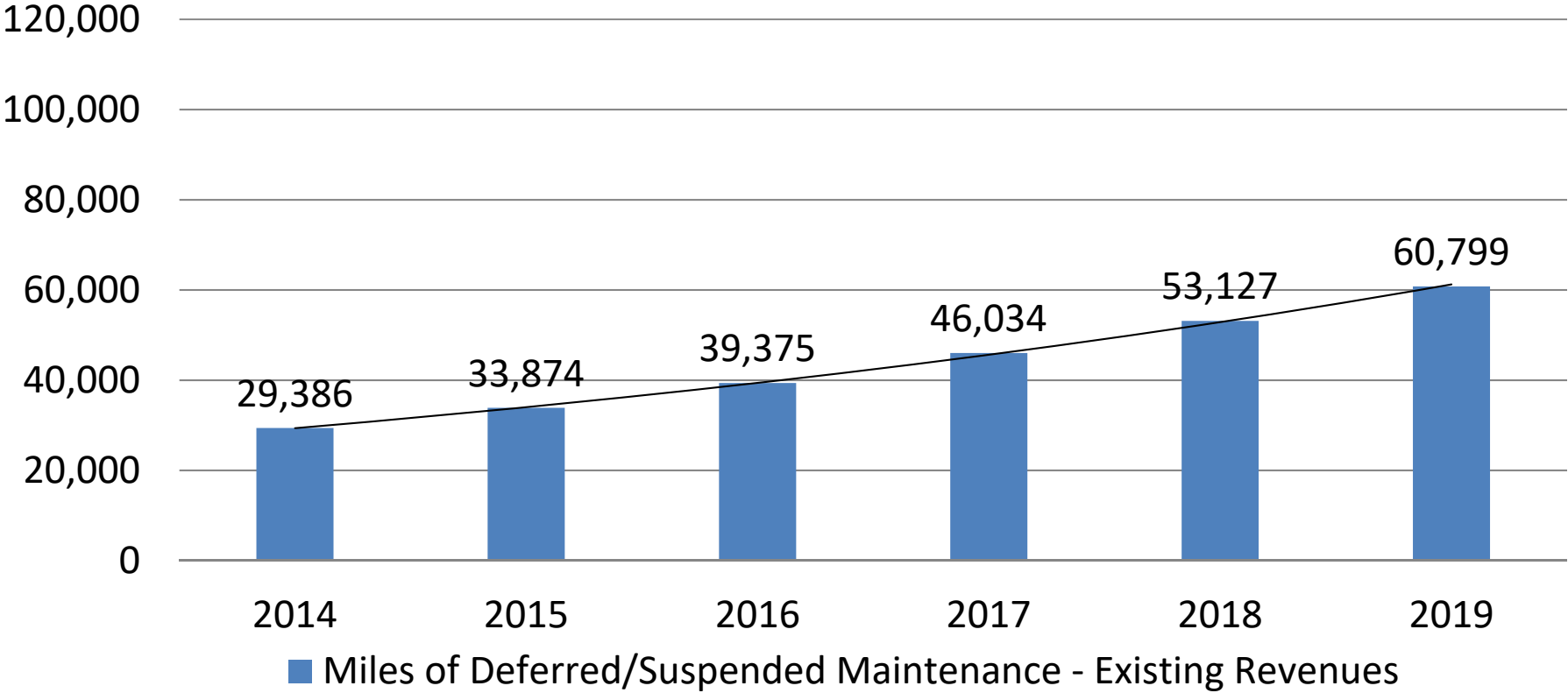
MFT Revenue/Costs vs. Purchase Power Townships/Road Districts in Illinois



Local Roads in Illinois

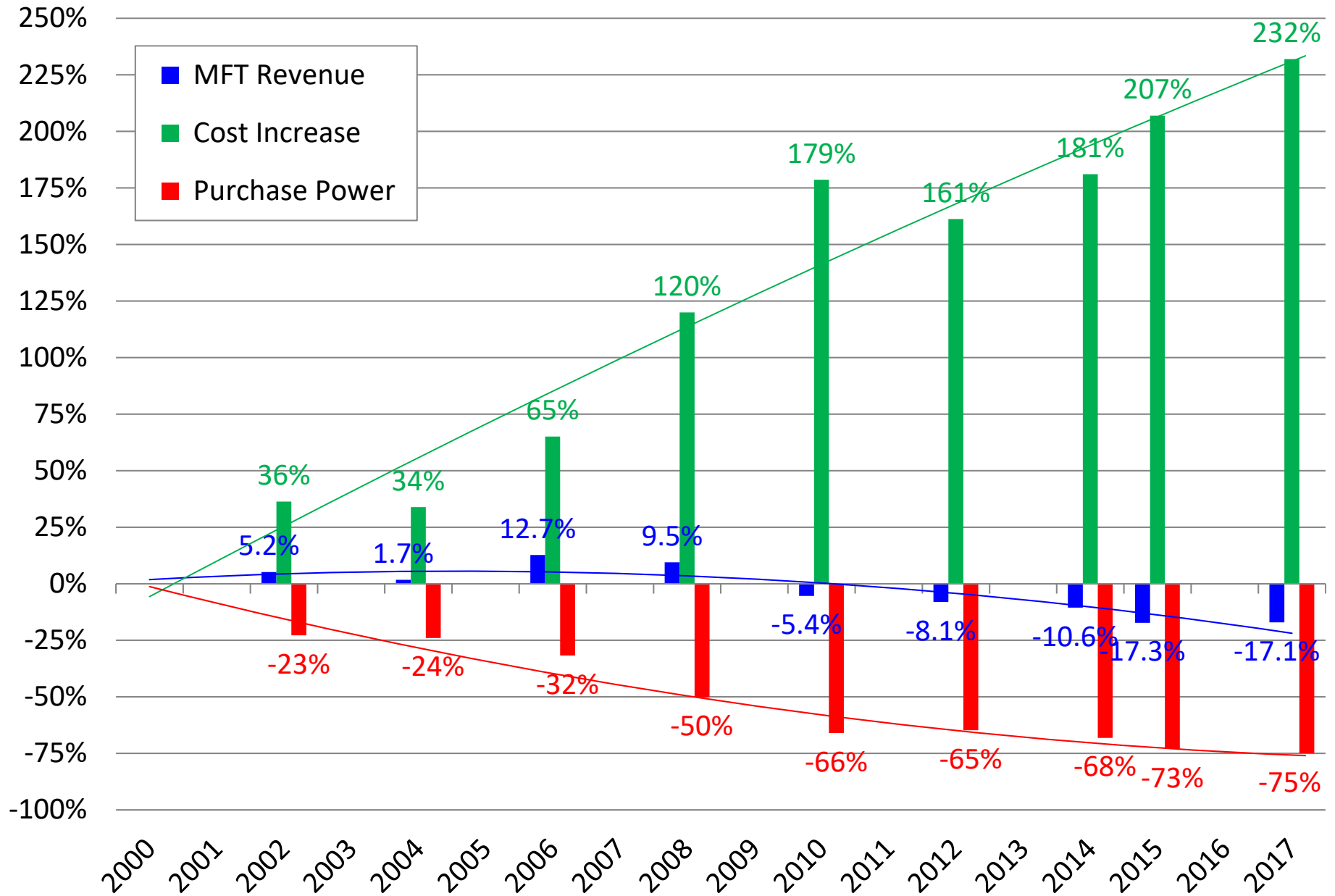
Miles of Deferred/Suspended Preservation

Total Local Road Mileage = 129,054

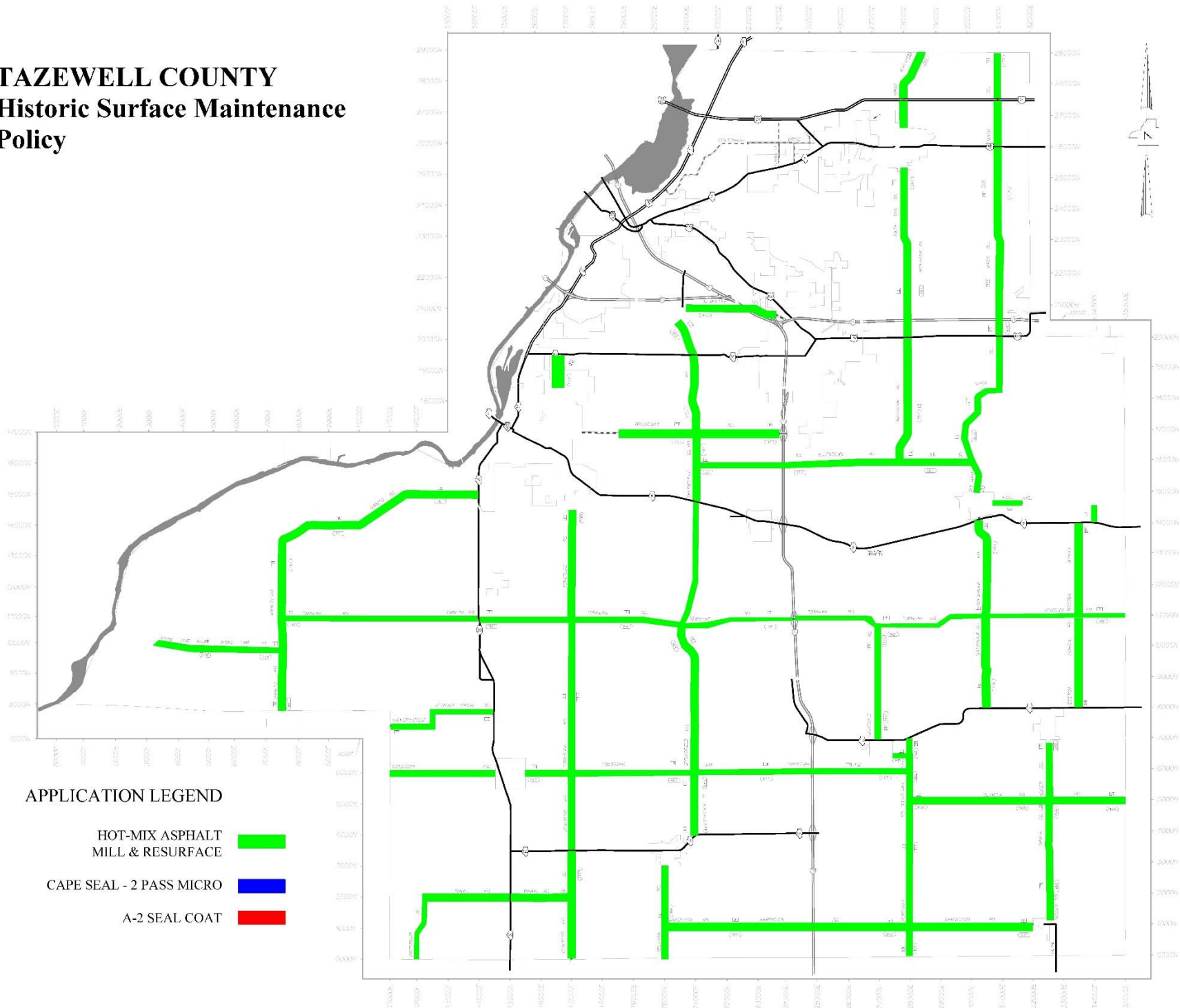


MFT Revenue/Costs vs. Purchase Power

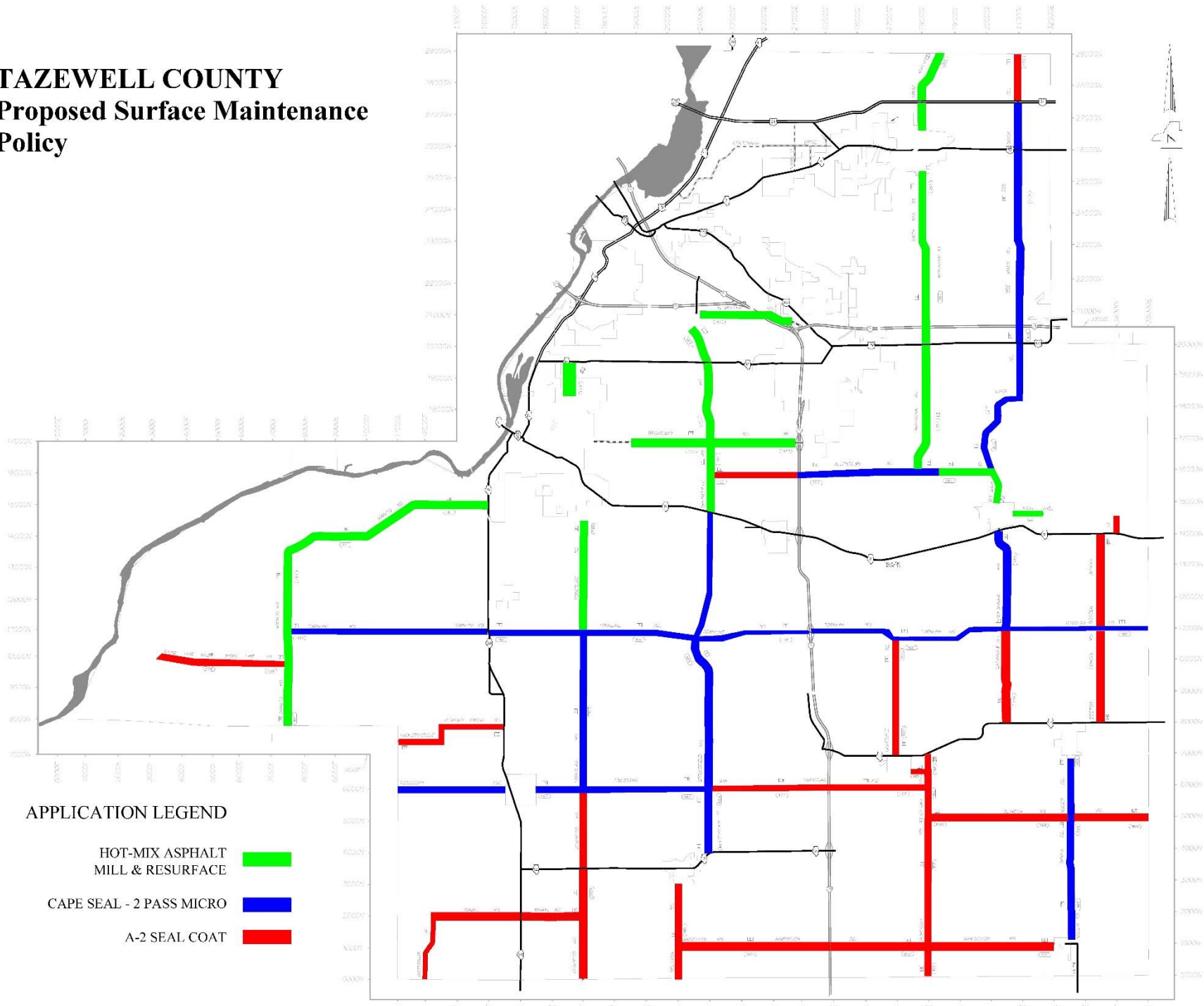
Tazewell County, Illinois



TAZEWELL COUNTY Historic Surface Maintenance Policy



TAZEWELL COUNTY Proposed Surface Maintenance Policy



Net Effect

We are watching our Local Road system, particularly the rural areas, slowly degrade back to conditions from an earlier time. We're watching it slowly return to dirt and mud.

Since gravel is a step along the way let's learn a little bit more about that stage.

QUESTIONS?

**Craig Fink, P.E.
County Engineer
Tazewell County, Illinois**

**Tazewell County Highway Department
21308 IL Route 9
Tremont, IL 61568**

**Phone: 309-925-5532
E-Mail: cfink@tazewell.com**