

2019 IDOT Flood Response

Kampsville Ferry/IL-108 Project

Illinois Transportation & Highway Engineering Conference
February 25, 2020



Brandon Oxley
Communications Center Manager

Joseph Monroe, PE
District 8 Operations Engineer



2019 FLOOD OVERVIEW

Flood Impacts



**2.1+ Million People
1,400+ Homes
300+ Businesses/Non-Profits**

1,000+ miles of roadway & bridges damaged or inaccessible

State-Level Disaster Management



**Illinois Emergency
management Agency (IEMA)
oversees State efforts**

**State Emergency Operations
Center (SEOC) activated for
multi-agency coordination**
State Unified Area Command (SUAC)
deployed locally as needed.

WebEOC
Information Sharing Portal
“Resource Requests” generated to
track response effort.

Inter-Agency Partnerships

- Provided necessary surge in manpower



DoC inmates filled & loaded millions of sandbags by hand onto IDOT trucks

**Illinois National Guard
stacked sand bags, monitored
levee conditions, responded to
levee boils, and more**



IDOT Response



IDOT Received 613 Resource Requests
(Over 38% of all Resource Requests)

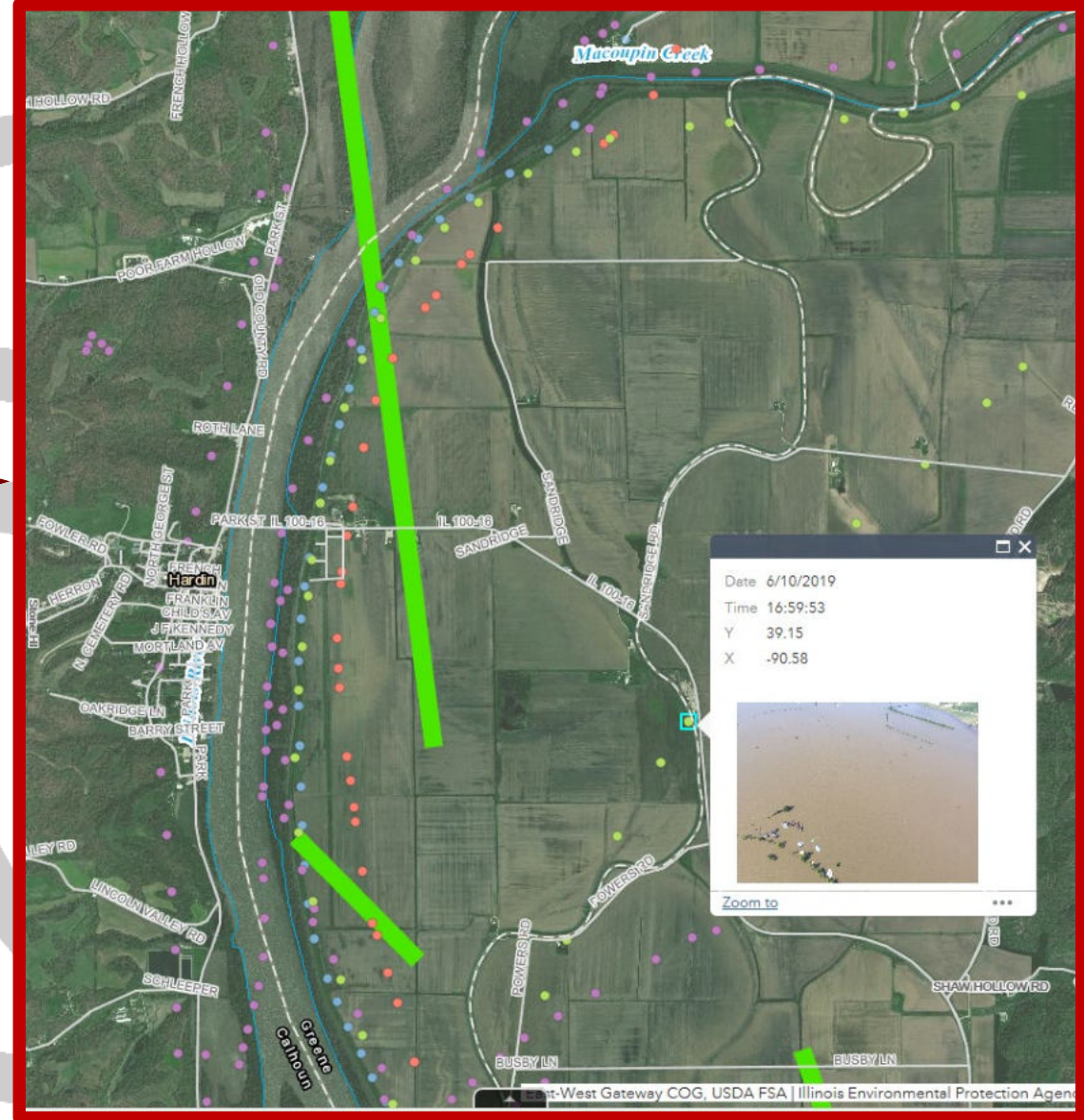
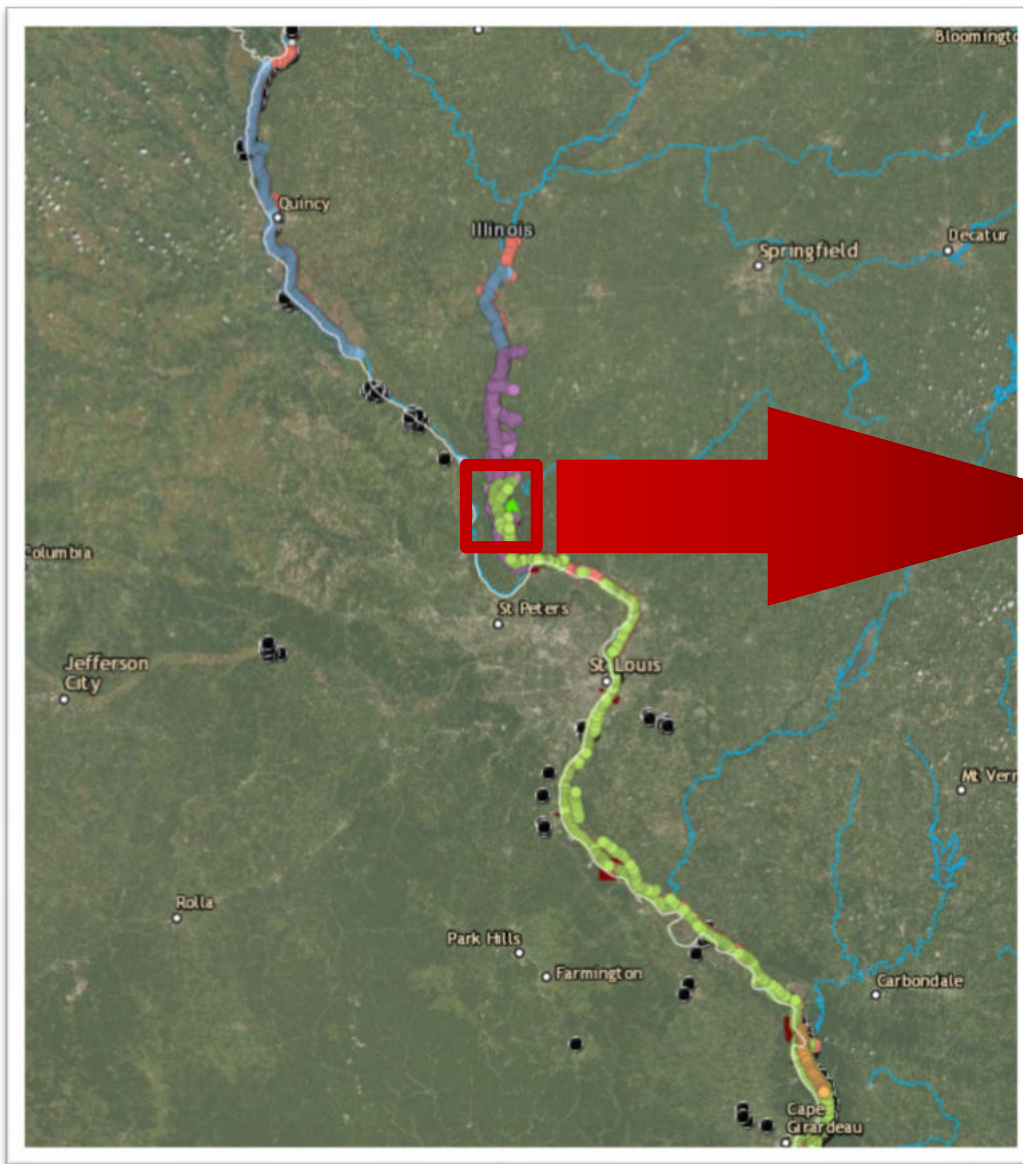
Aviation Assets Played an Important Role

Manned & Unmanned Aircraft Systems (UAS/drones) deployed along multiple impacted rivers throughout the State.



Hundreds of miles of levees were flown - many, several times - to document condition & identify potential failure points.

Prairie du Rocher / Hardin
<https://youtu.be/C4TNPYnkbTQ>



GIS portal was developed to share georeferenced data.

Aircraft gathered information to help establish emergency routes for evacuation & first responders.



In total, over a thousand miles of river across 40+ counties were flown.



KAMPSVILLE FERRY

IL-108 DETOUR



As flood waters continued to rise along the Mississippi, the Kampsville Ferry was the only way to access a large portion of Calhoun County.



IL-108 also became impassible, and an urgent solution was required to ensure the safety of local residents.



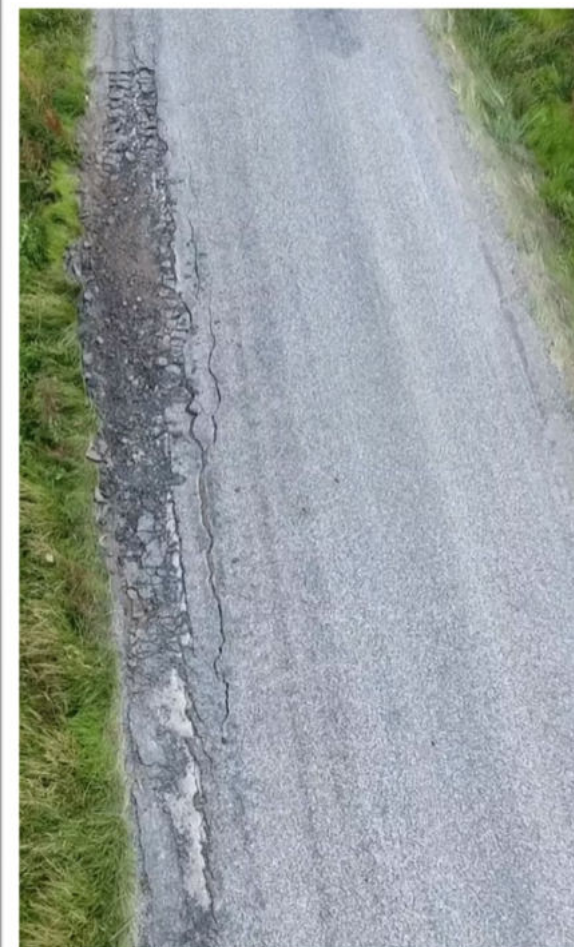
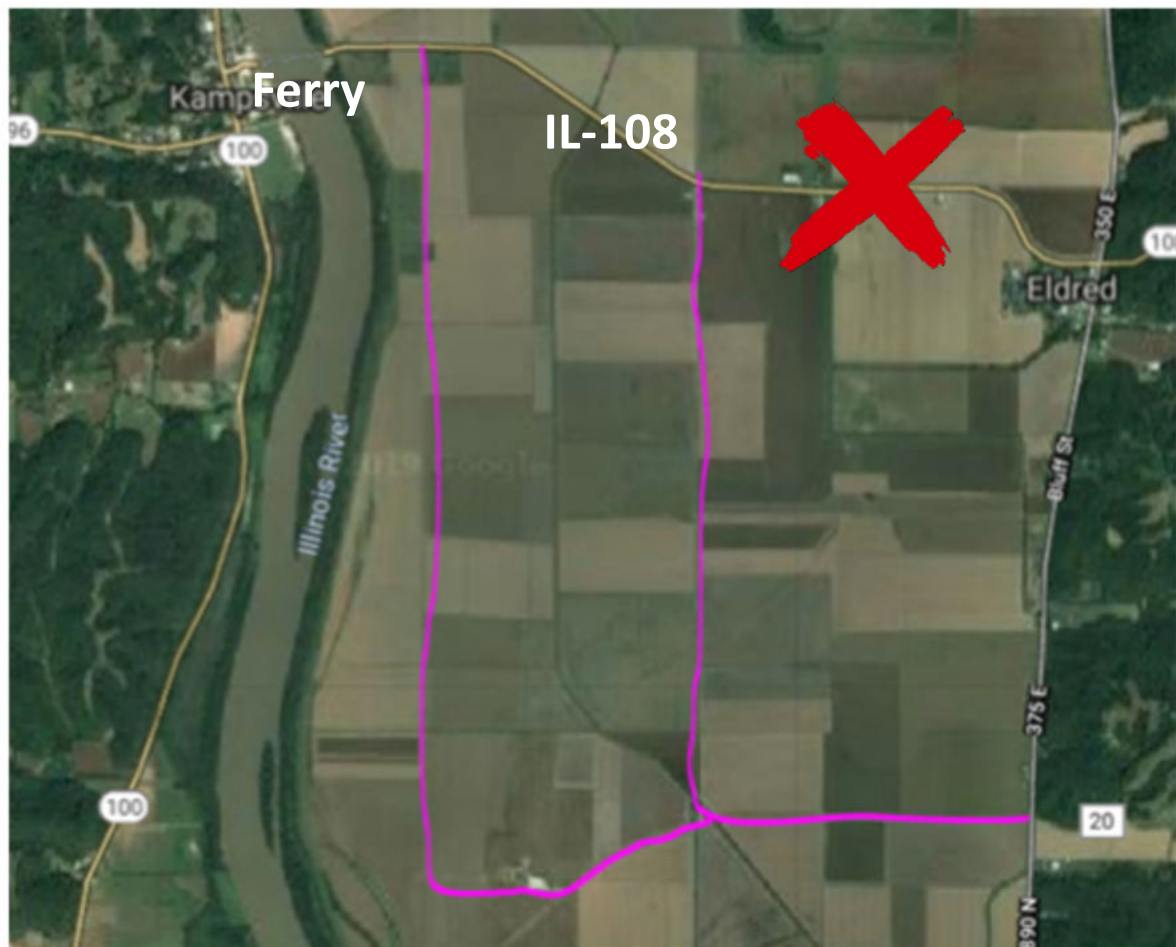
Five (Plus) Options Considered

- **Establish Coupler System w/ A2 Treatment**
- **Establish Coupler System w/ Agg Base and HMA Surface**
- **Establish Coupler System w/ HMA Patching & Agg Surface**
- **Establish One Way Flagged traffic on western road**
- **Dewater IL 108**

Subsequent Discussions:

- **Full HMA build**
- **Coordinate with USCoE to reestablish 1993 Landing**

An expedited alternatives analysis indicated a detour around the flooded portion of IL-108 was possible.



However, many of the existing “roads” were... less than optimal.



DETAILED DAMAGE INSPECTION REPORT

(Title 23, Federal-aid Highways)

Report Number	S-Greene-1
Sheet	1 of 1
FHWA Disaster Number	IL-19-1
Inspection Date	07/09/2019
Federal-aid Route Number	FAP 761
State	County
IL	Greene

Location (Name of Road and Milepost)

IL 108 was flooded from approximately mile 2.0 to 2.9. Roads that were reinforced and repaired are Township Rds 975N, 200E, 100E, and a private road (see attached map).

Description of Damage

Flood water forced the closure of IL 108 at approximately 2 miles east of the Kampsville Ferry landing in Greene Co. Local and Private Rds were reinforced to maintain essential travel to and from the ferry. Additionally, these roads were repaired and an A3 treatment done once IL 108 reopened.

Cost Estimate

	Description of Work to Date (Equipment, Labor, and Materials)	Unit	Unit Price	Quantity	Cost	
					Completed	Remaining
Emergency Repair	D8	ea				
	Labor	ea	\$82,359.7	1	\$82,359.72	
	Equipment	ea	\$110,251.	1	\$110,251.17	
	Material - Stock	ea	\$886.80	1	\$886.10	
	Material - Vendors	ea				
	(Calhoun Quarry Inc)	ea	\$47,658.2	1	\$47,658.26	
	(Mahoney Asphalt LLC)	ea	\$4,492.80	1	\$4,492.80	
	(Louis Marsch Inc)	ea	\$1,251.15	1	\$1,215.15	
		ea				
		ea				
	Contract - Greene Co. Highway	ea				
	(ES20-05 - A3 Treatment)	ea	\$79,267.1	1	\$79,267.10	
	Method			Subtotal	\$326,130.30	
	<input type="checkbox"/> Local Forces	<input checked="" type="checkbox"/> State Forces	<input checked="" type="checkbox"/> Contract	PE/CE		
	Emergency Repair Total				\$326,130.30	







**Concept/Approach had to be settled upon.
Cost estimates generated; Approvals expedited.**

**Local coordination
began immediately.**



**Materials sourced. Crews scheduled.
Equipment pulled in from across the State.**



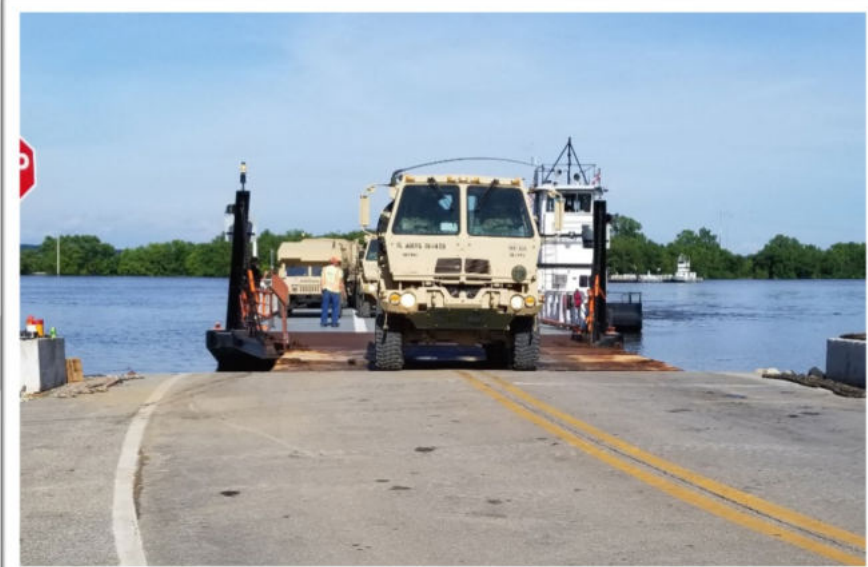




Construction completed in only 4 days!



153 Tons of Asphalt | 38,403 Tons of Aggregate



National Guard among the first across.









IDOT RESPONSE SUMMARY

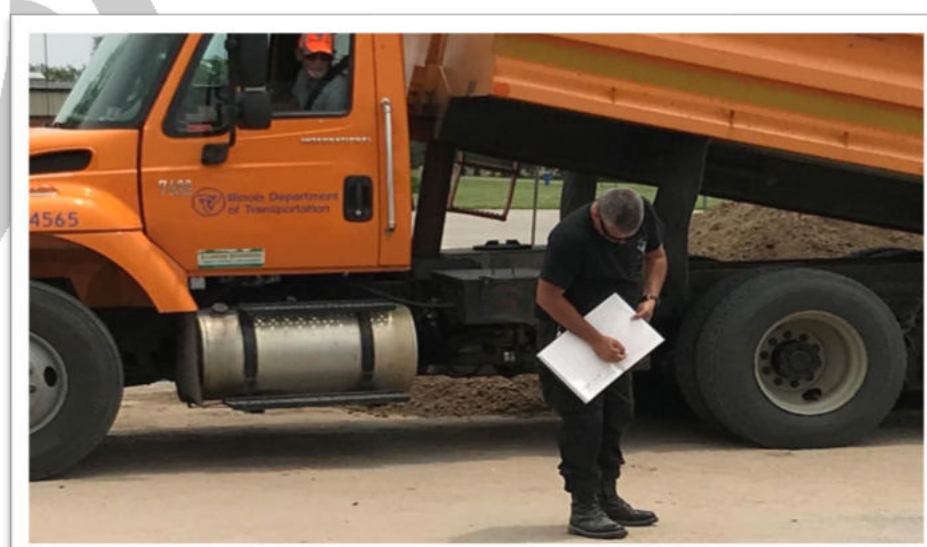
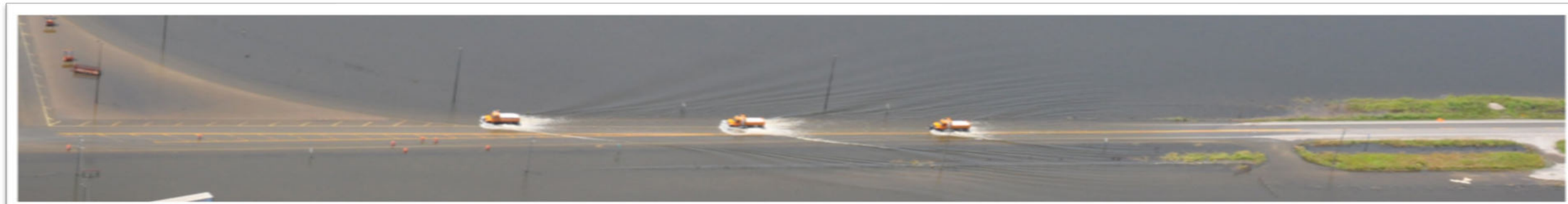


40+ Industrial pumps & discharge hoses for dewatering



Traffic control at dozens of locations to ensure safe travel and/or closure when unsafe for public.





Safety/Operational assessment of dams/roads/bridges.

Technical Assistance: Evacuation Plans; Debris Management Plans

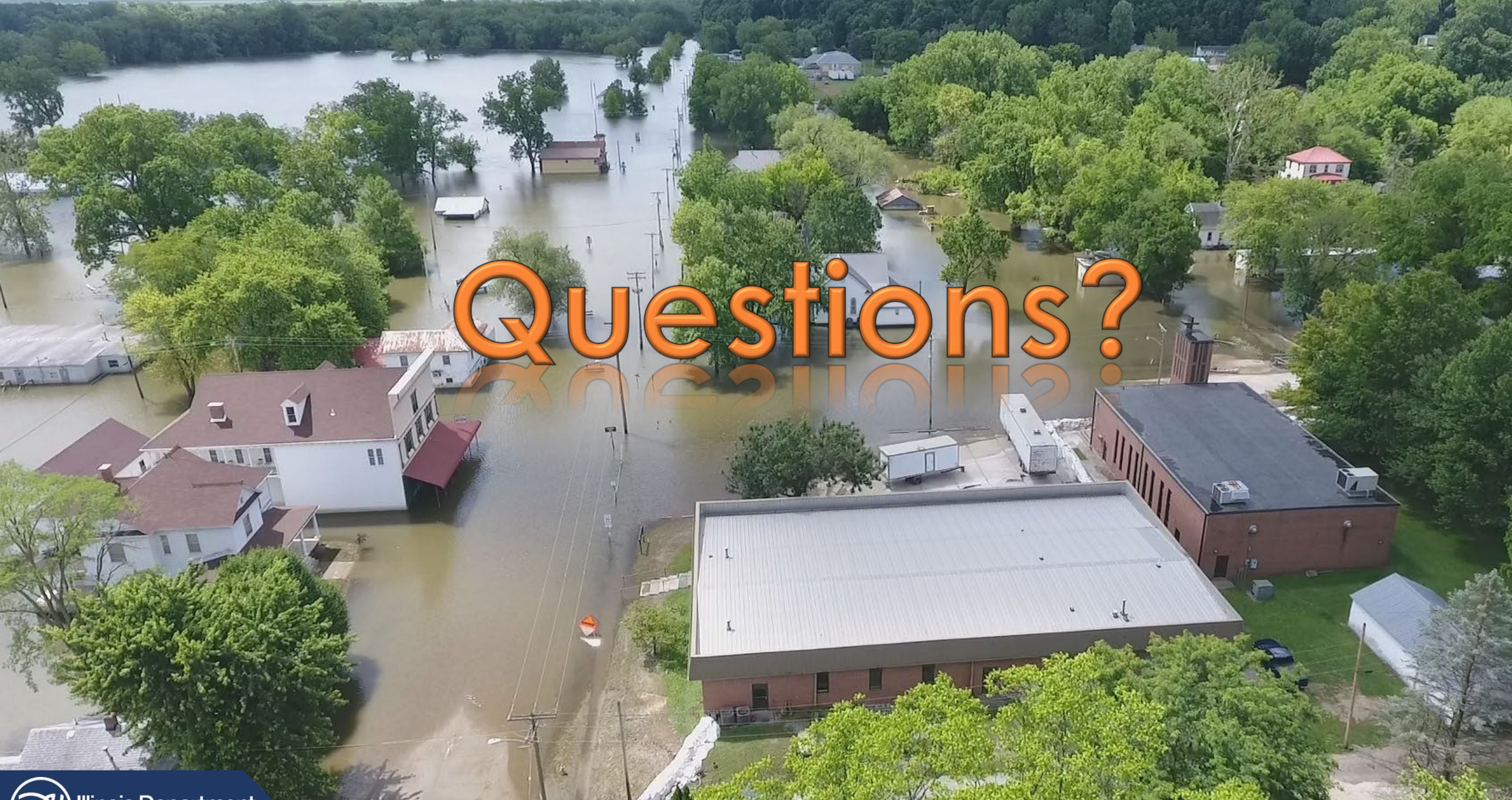
Hundreds of truckloads carrying supplies like lumber and potable water.



**1.3 million Tons of Sand | 4.4 million Empty Sand Bags
3,382 Rolls of Plastic (6.6 million sqft)**

The Recovery Continues





Questions?