



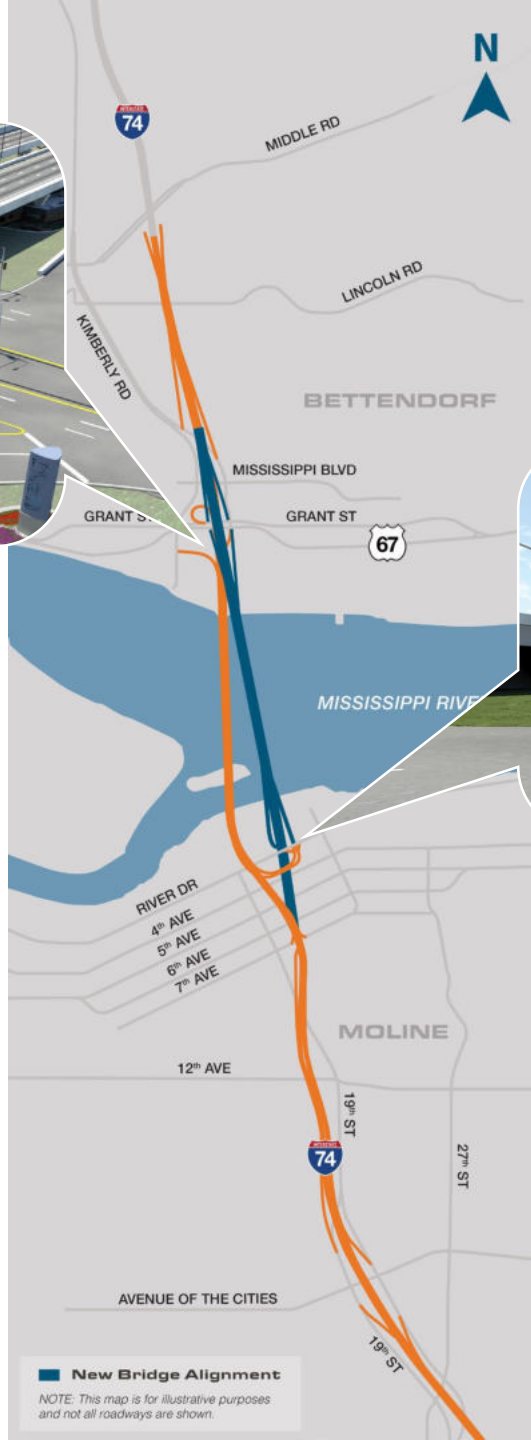
I-74 Mississippi River Bridge Project

February 25, 2020
T.H.E. Conference





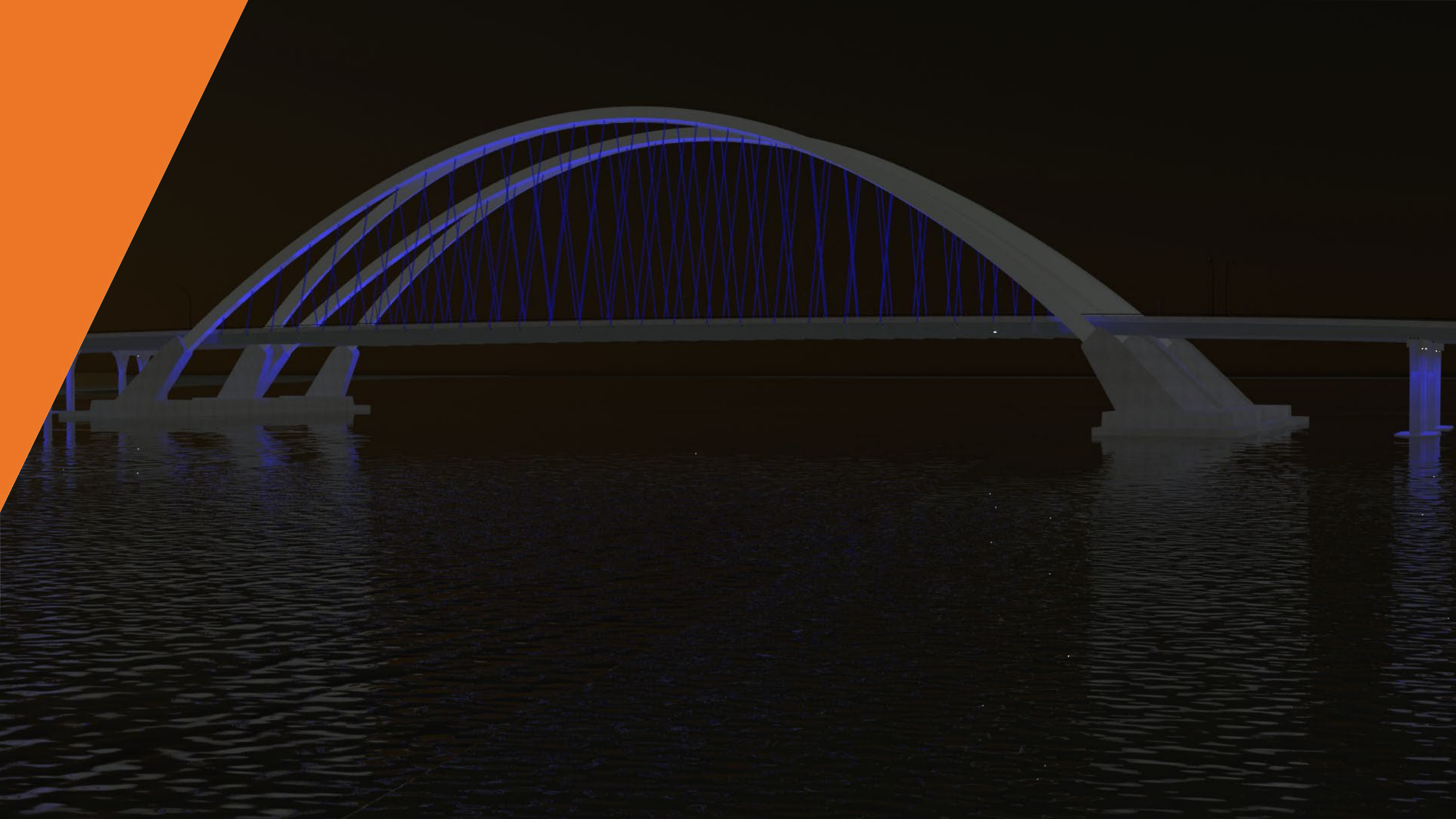


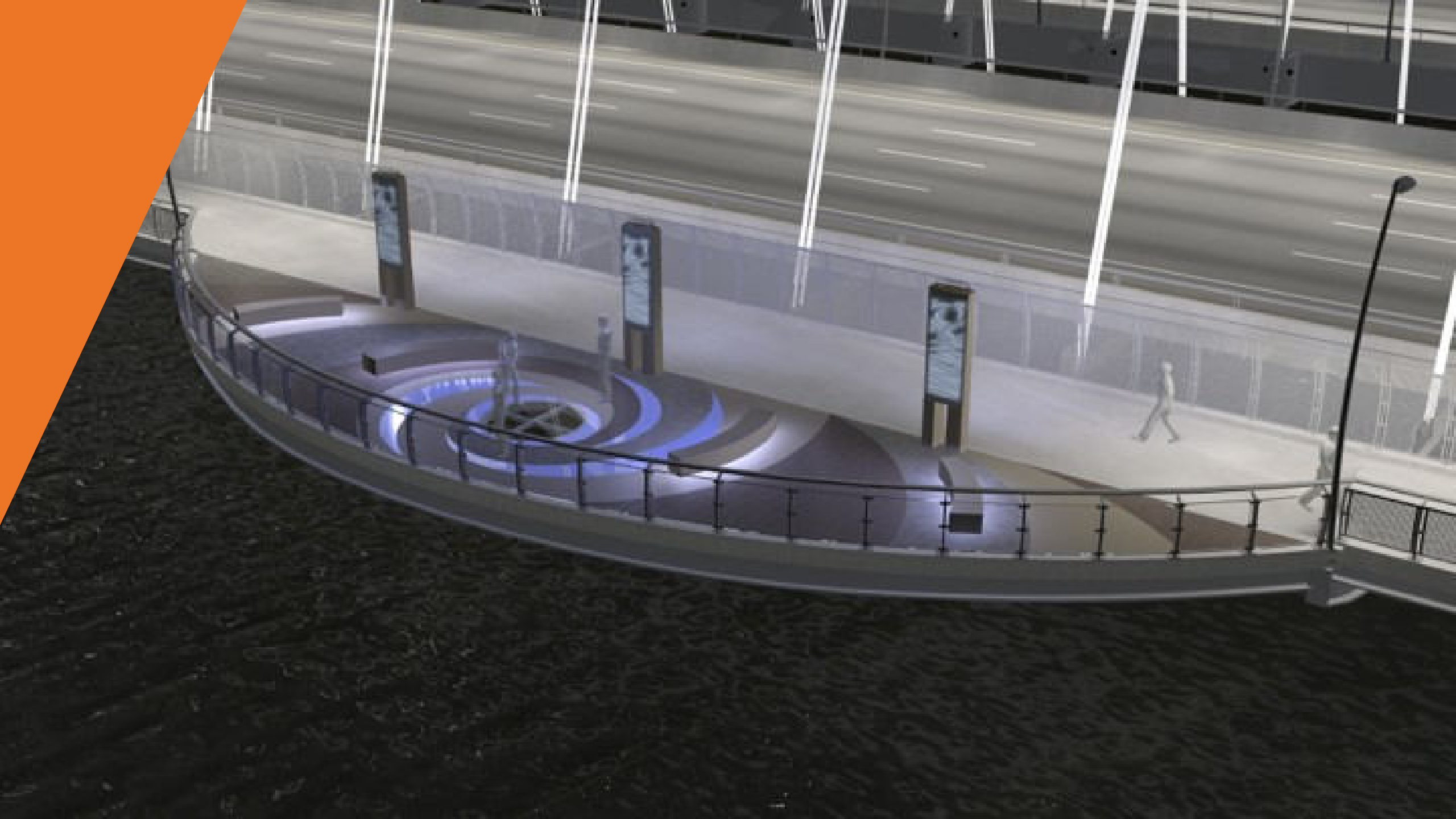


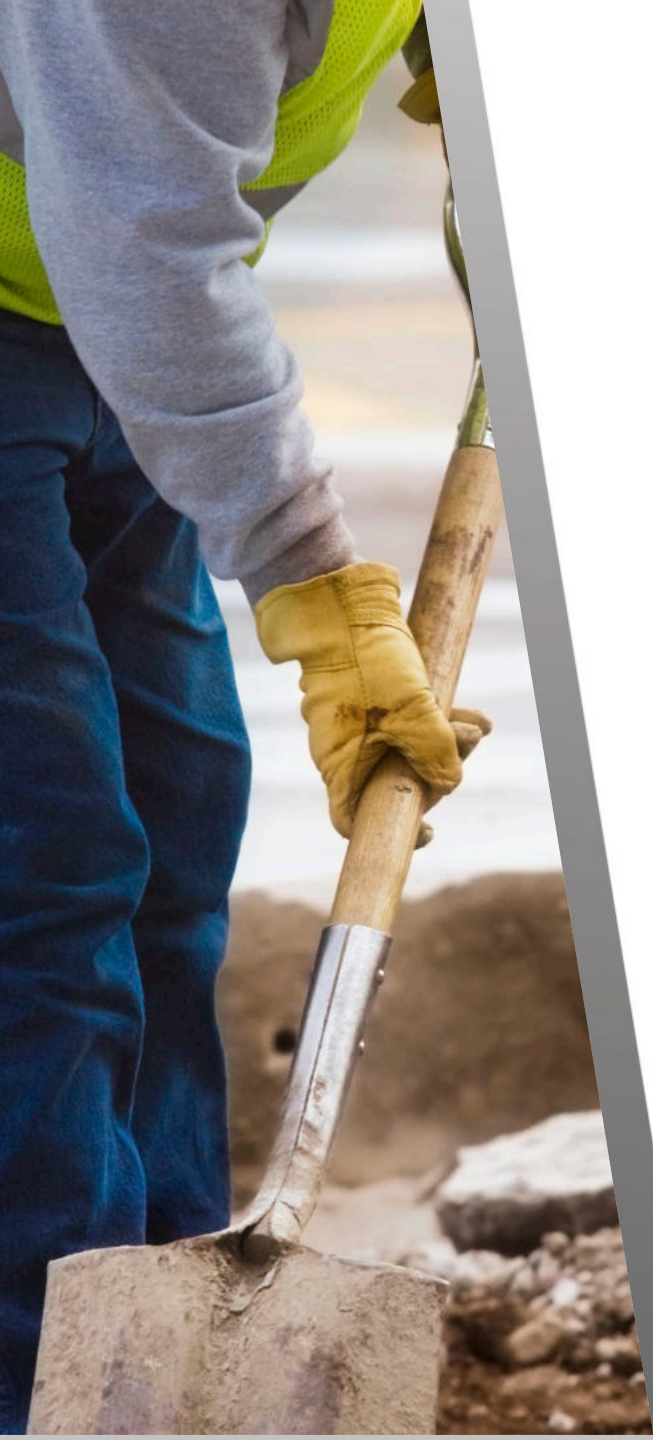
■ New Bridge Alignment

NOTE: This map is for illustrative purposes and not all roadways are shown.









Cost & Funding

Estimated \$1.2 Billion for entire project

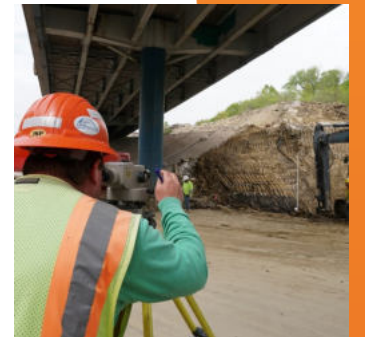
Federal and state monies, with communities funding local enhancements

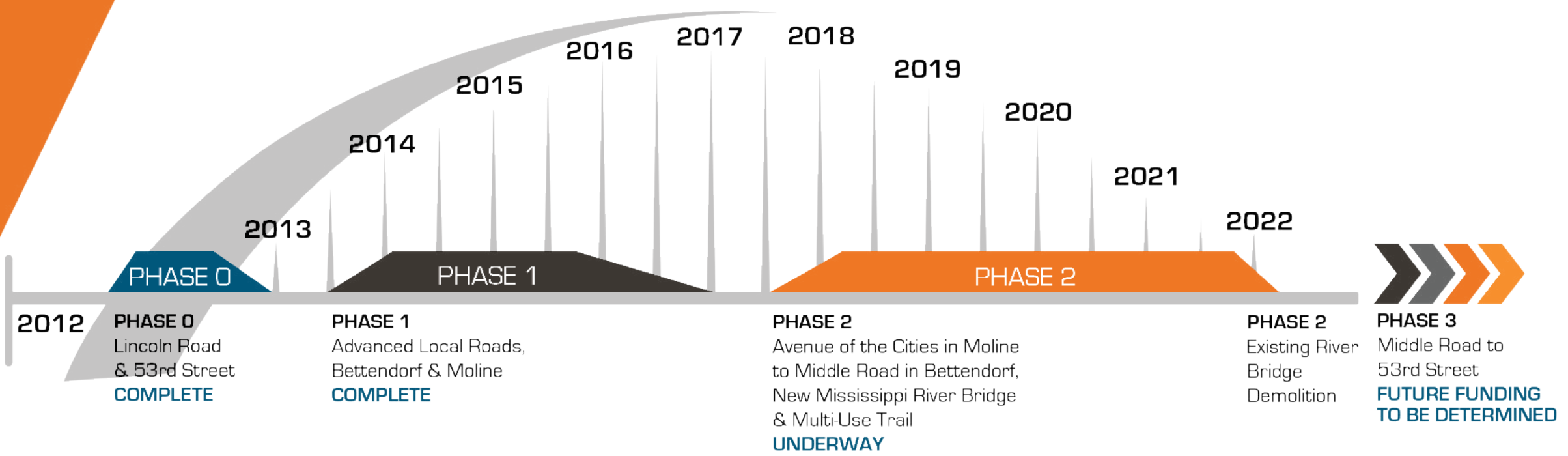
Construction



Oversight

- Iowa DOT
- Illinois DOT
- FHWA
- General Engineering Consultant Team
 - Entire corridor oversight
 - Scheduling
 - Financial oversight
 - Traffic control
 - Environment
 - Utility coordination
 - Communications/outreach
- CE&I





CONTRACT 64E26
WALSH
\$84 MILLION

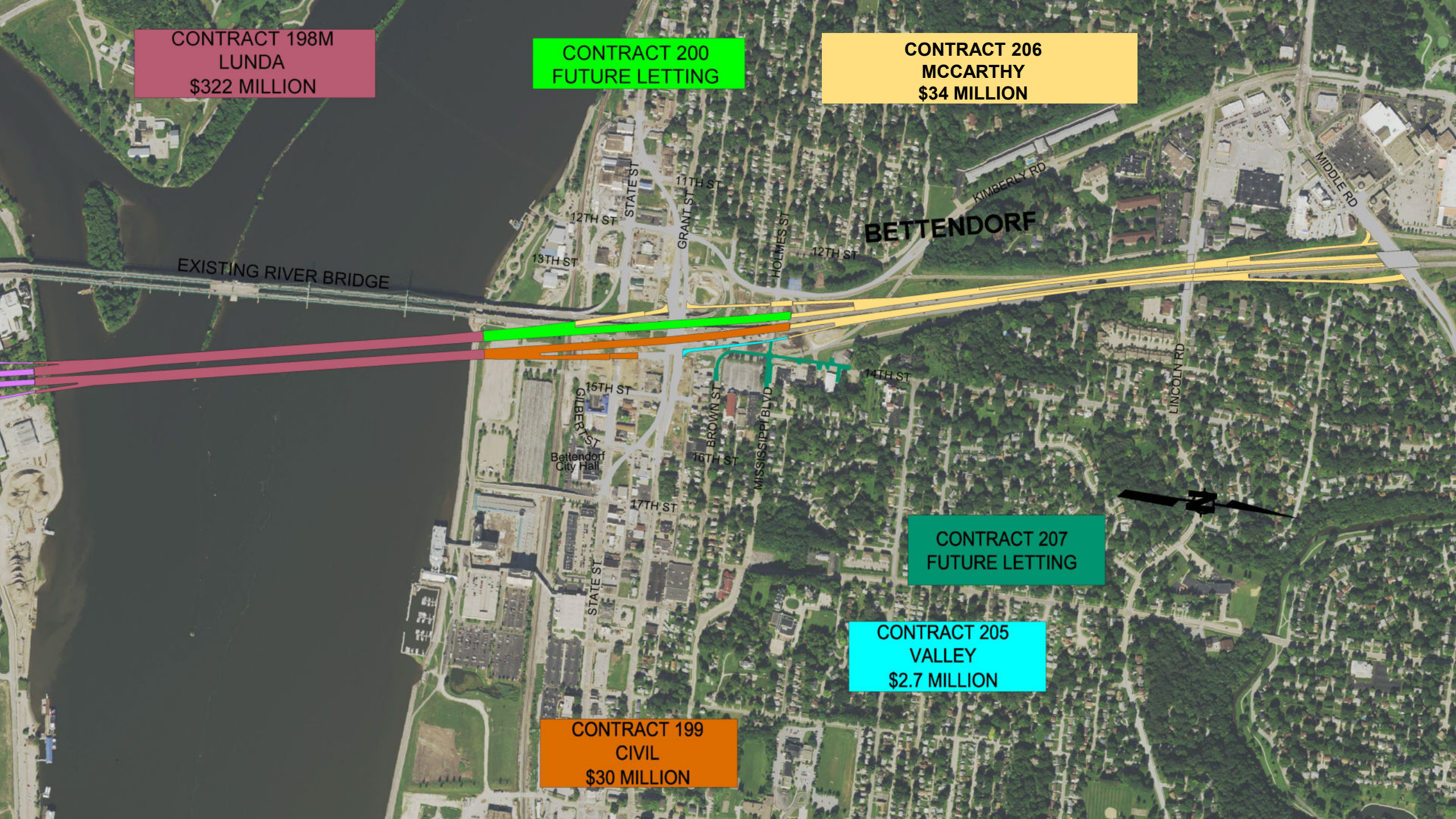
CONTRACT 64C08
KRAEMER
\$82 MILLION



CONTRACT 198M
LUNDA
\$322 MILLION

CONTRACT 200
FUTURE LETTING

CONTRACT 206
MCCARTHY
\$34 MILLION



CONTRACT 207
FUTURE LETTING

CONTRACT 205
VALLEY
\$2.7 MILLION

CONTRACT 199
CIVIL
\$30 MILLION

FALL 2017



EARLY 2018



SUMMER 2018

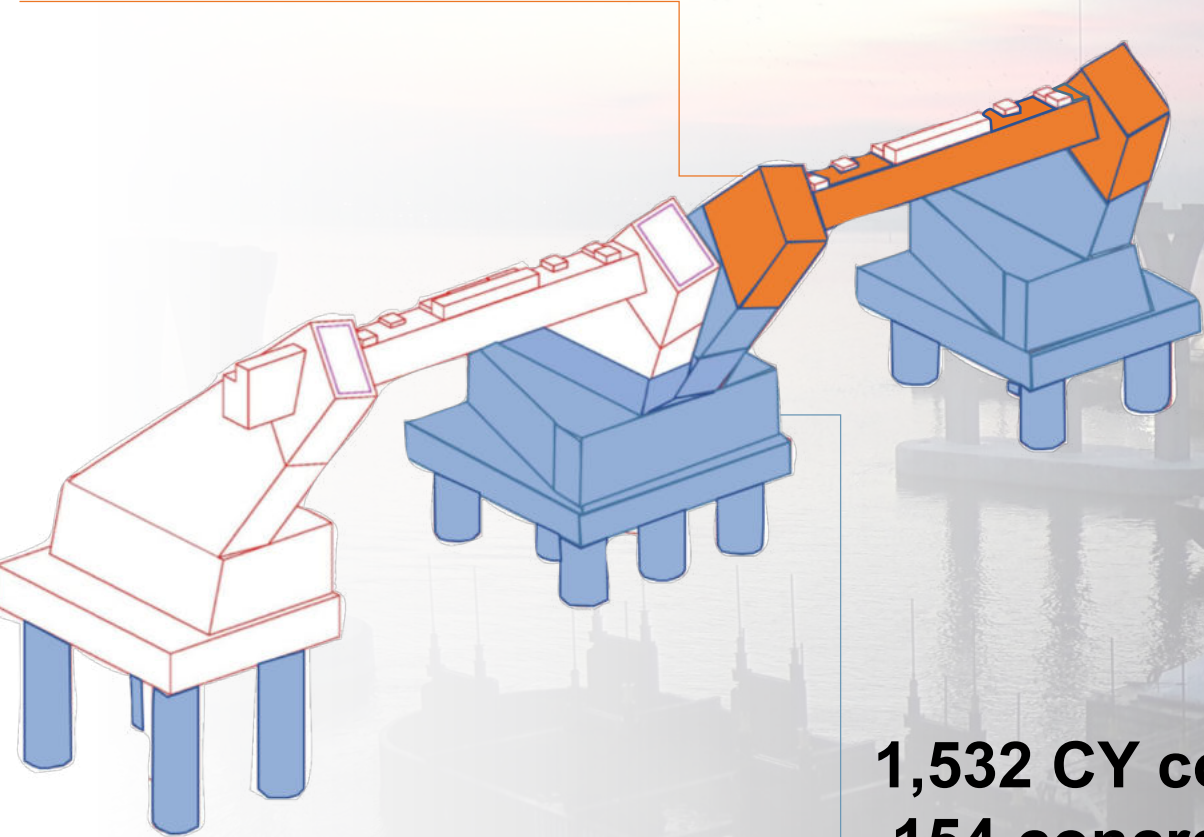


FALL 2018



870 CY of concrete (arch ribs and crossbeam)

87 concrete trucks



1,532 CY concrete (pedestal)

154 concrete trucks

EARLY 2019



SPRING 2019
R0





SUMMER 2019

SUMMER 2019



FALL 2019











Project Highlights

- Over 88 subcontractors (50+ from the region)
- Over 300 workers on average per day
- Over 200,000 cubic yards of concrete
- Over 30M lbs of rebar
- Over 70M lbs of structural steel
- Over 75 miles of electrical wire
- 14 miles of fiber optic cable
- 1,300 luminaires

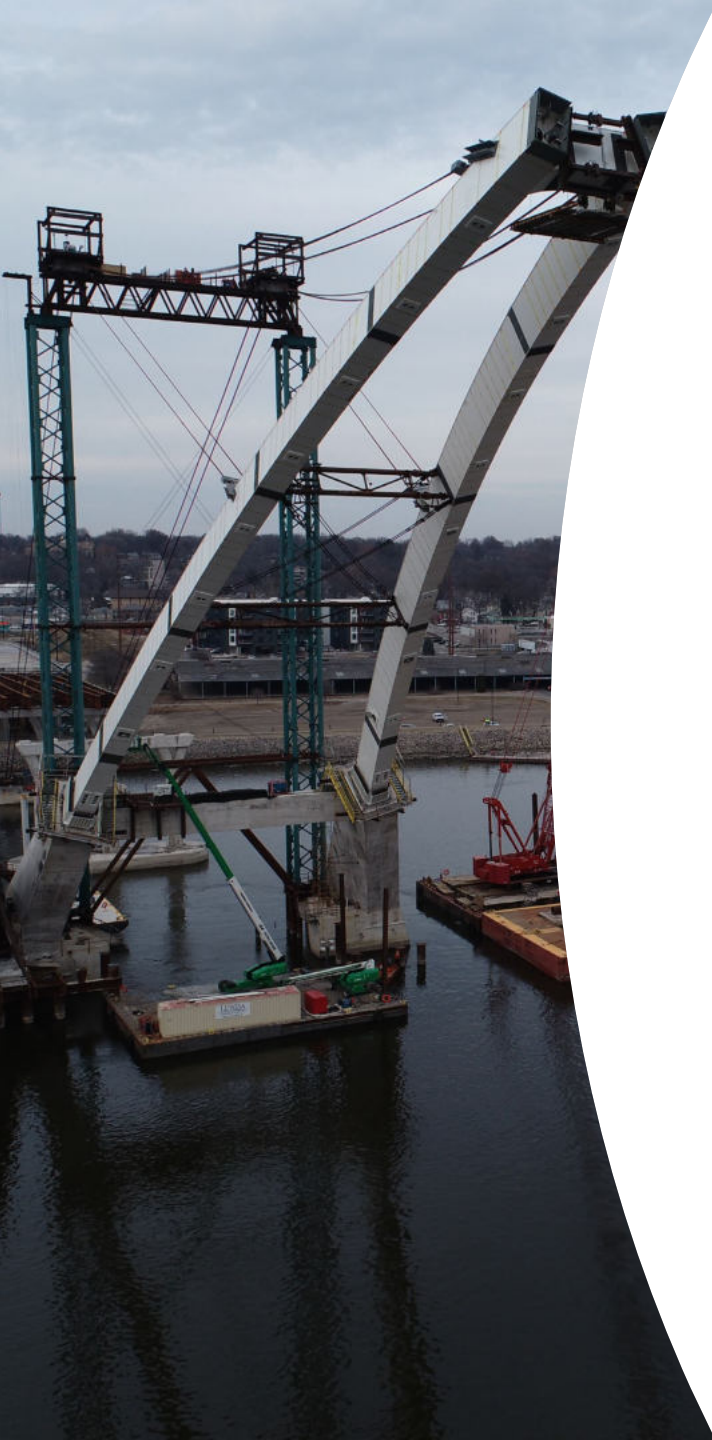
Challenges & Solutions



Construction

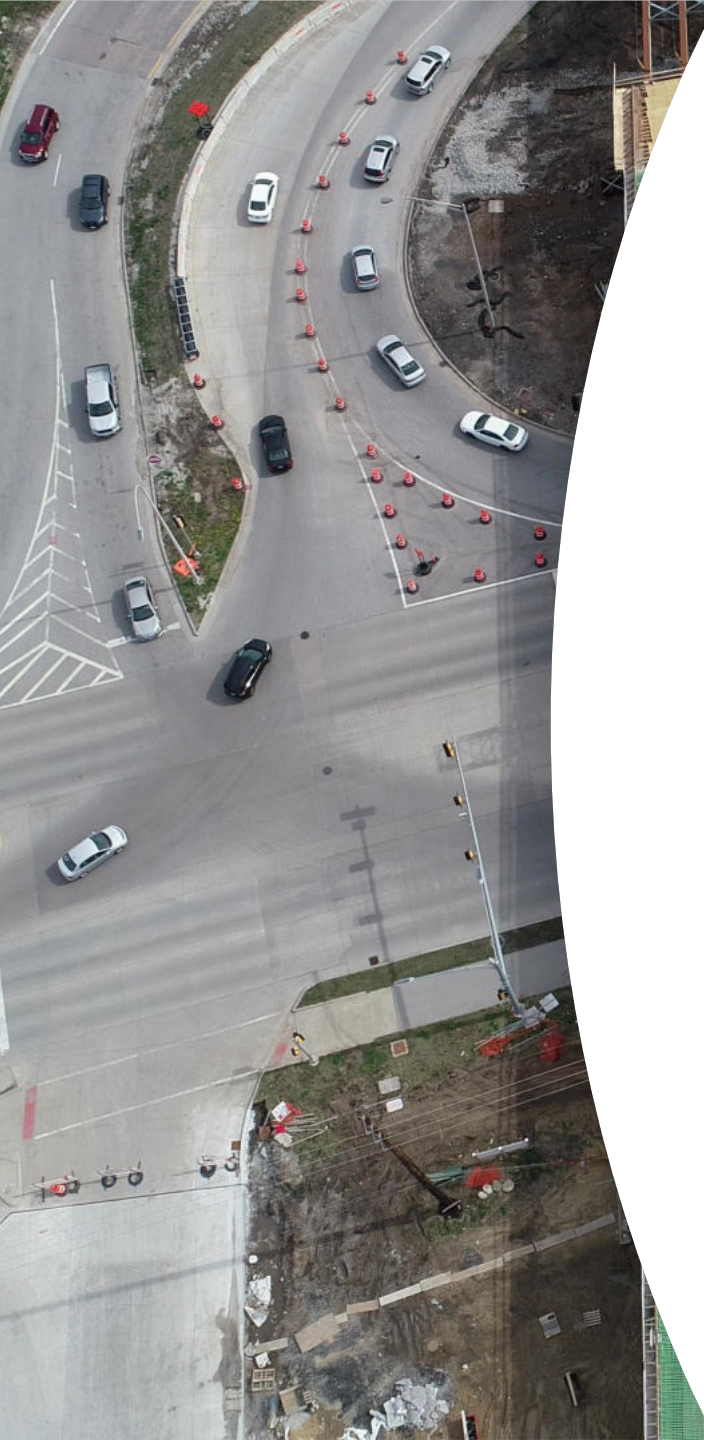
- **Challenges:**
 - Abutments (Moline)
 - Settlement (Bettendorf)
- **Solutions:**
 - Rigid inclusion
 - Steps to minimize settlement time





Construction

- **Challenges:**
 - Arch erection
- **Solutions:**
 - Developed task force
 - Floor system pre-assembly
 - Deck pours
 - Complete non-essential tasks and finishing items after the bridge is open



Traffic

- **Challenges:**

- Maintain bridges for local traffic
- Maintain two lanes of local traffic
- Reduce congestion on local route
- Train delays in Illinois
- Changing motorist behavior
- Construction delays

Traffic

- **Solutions:**

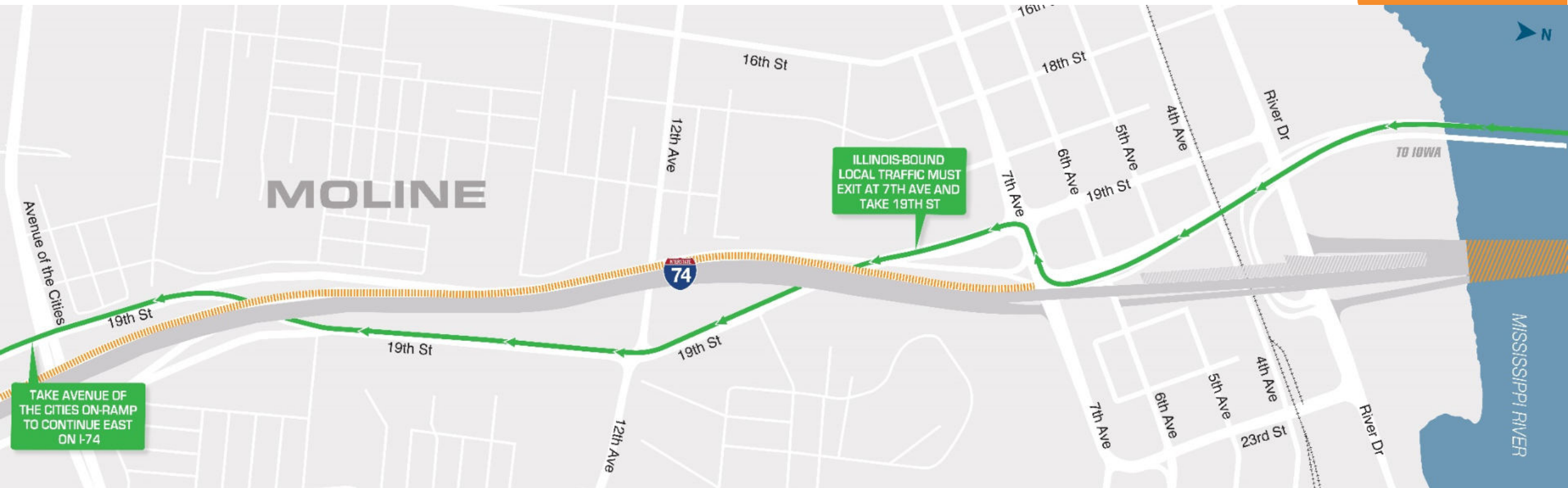
- Detour interstate thru-traffic
- Local traffic detoured to local roads
- Continue to improve signage, traffic signals, pavement markings
- U-turn on completed structure to avoid train delays



Traffic

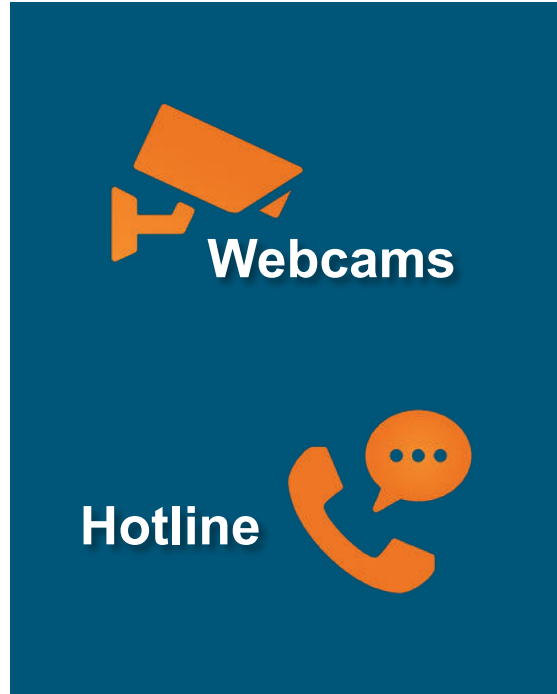
- **Solutions:**

- Propose eastbound route to allow work to continue in Moline





Press
Conferences



Webcams

Hotline



Public
Meetings



Social
Media
Updates

Website

Extensive Public Outreach



Speakers
Bureau





Next Steps

- Complete arches for westbound bridge
- Complete westbound approaches and main span
- Continue working on eastbound bridge
- Continue working on eastbound mainline
- Continue to keep public informed of changing traffic patterns and progress



I74RiverBridge.com



Project Hotline

1-866-174-4ALL



YouTube



@I74RiverBridge



THANK YOU