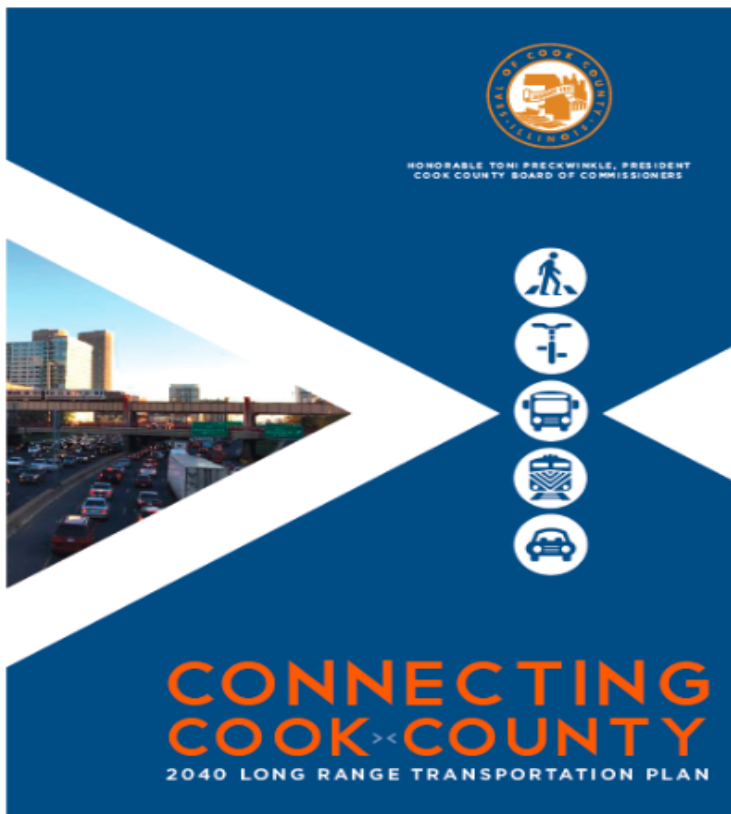


INVEST IN COOK

COOK COUNTY
DEPARTMENT OF TRANSPORTATION AND HIGHWAYS

- 
- Illinois Transportation and Highway Engineering Conference
 - February 27, 2019

CONNECTING COOK COUNTY



- First LRTP in over 75 years
- Approved by Cook County Board, August 3, 2016
- Establishes five priorities to guide transportation policy and investments

POLICY PRIORITIES

Policy Priorities to Guide Transportation Investment

- Prioritize Transit and Other Transportation Alternatives
- Support the Region's Role as North America's Freight Capital
- Promote Equal Access to Opportunities
- Maintain and Modernize What Already Exists
- Increase Investments in Transportation



IMPLEMENTING OUR VISION

- **Cook County Freight Plan (2018)**
- **South Suburban Mobility Study (2019)**
- **Countywide Transit Plan (2020)**
- **Invest in Cook (2017 – present)**

PROGRAM CREATION

- Invest in Cook Program initiated in 2017
- \$8.5 million grant program for transportation projects

INVEST IN COOK PROGRAM GROWTH



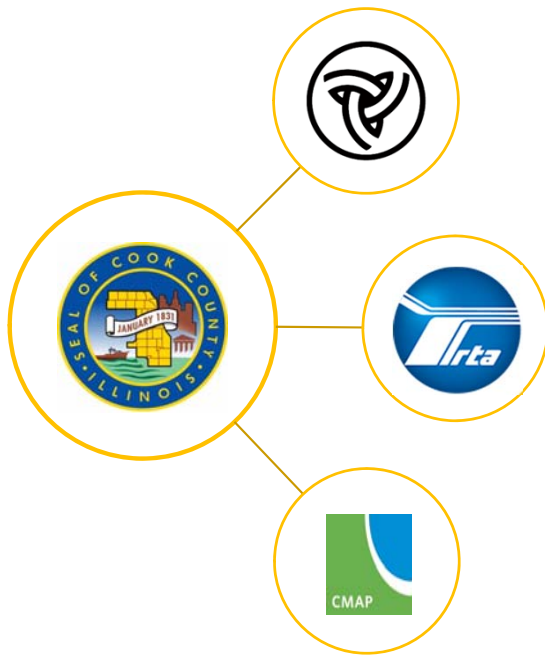
INVEST IN COOK

AN INITIATIVE OF: 

GOALS FOR INVEST IN COOK

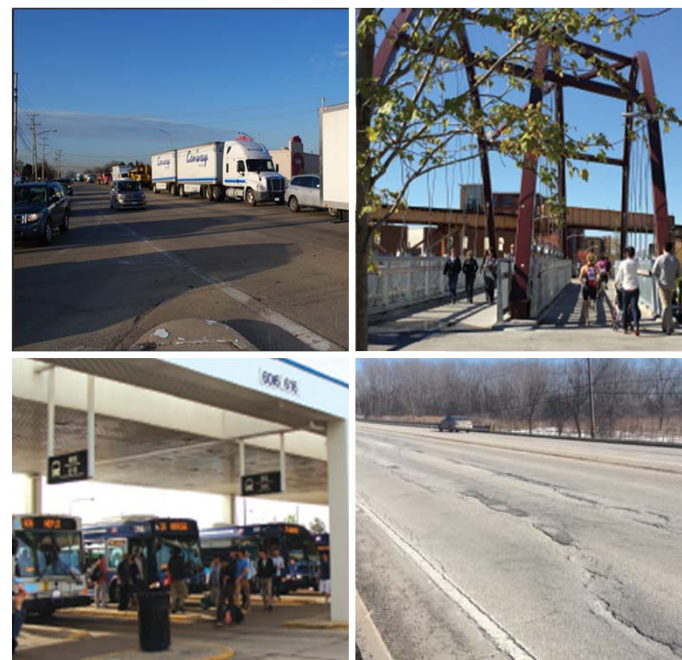
- Implement projects that help to achieve our LRTP priorities
- Support local and regional governments in efforts to build transportation network
- Advance projects that might otherwise languish

AGENCY COORDINATION



ELIGIBILITY

- Any applicant that has jurisdiction or control over a transportation asset within the county
- Any phase of project including land acquisition
- Any transportation asset under local, County, or State jurisdiction



APPLICATION

- **Simplicity was important**
- **Checkboxes and text fields**
- **Rough cost estimate**
- **No technical expertise**
- **Application submission**
- **Online submission for application and supporting documentation**

PROJECT EVALUATION

- **General Measures**
- **Application is complete**
- **All required documents are submitted**
- **Quantitative Evaluation**
- **Measures tied to Connecting Cook County priorities**
- **Qualitative Evaluation**
- **Review of project description and benefits**
- **No obvious barriers to completion**
- **Phone Interviews**

PROJECT EVALUATION

- Separated by mode
- Transit projects
- Bicycle and pedestrian projects
- Freight-related projects
- Roadway projects



INVEST IN COOK

AN INITIATIVE OF:  **CONNECTING**
COOK COUNTY

QUANTITATIVE EVALUATION

Data sources

Openly available and dependable data

Metrics

- Employment
- Low/mod income areas
- Transit ridership
- Traffic congestion
- Transit deserts
- Complementary land uses
- Facility condition
- Truck/train traffic
- Crashes/injuries

QUALITATIVE ASSESSMENT

- Review of project readiness/feasibility
- Review of project benefits
- Leverage Ratio (County funding contribution/Other funding sources)
- Very low- and low-need communities (as designated by CMAP) will be expected to match County funds on at least a one to one basis
- Distribution of projects across phases, modes, geography
- Equity

2017 & 2018 PROGRAM SUMMARIES

2017 & 2018 SUBMISSION SUMMARY

SUBMISSION SUMMARY

Applications Received (2017/2018): 106/84

Total Amount Requested (2017/2018): \$40,570,077.82/ \$41,793,250.01

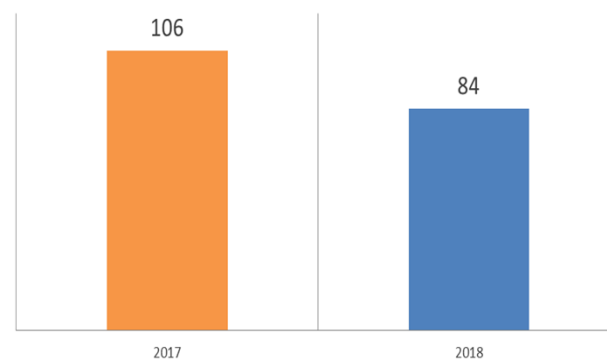
Total Cost of Requested Project Phases (2018): \$80,386,729.33

Total Cost of Projects (2018): \$656,212,417.41

TOTAL AMOUNT REQUESTED



NUMBER OF APPLICATIONS RECEIVED



INVEST IN COOK

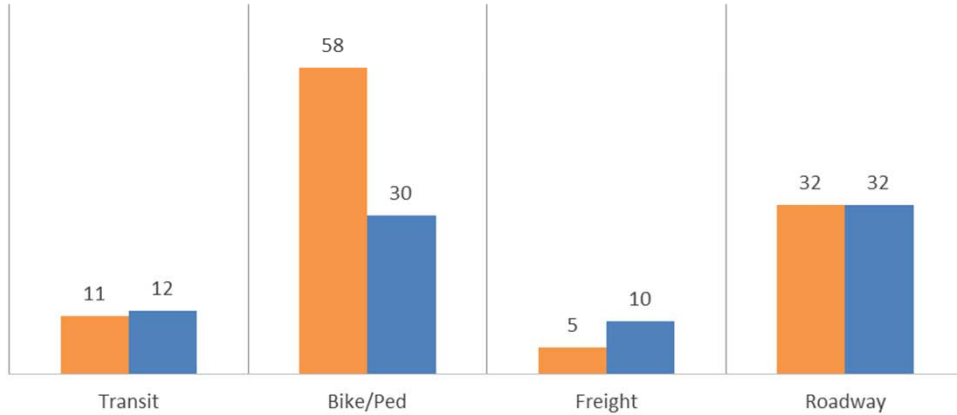
AN INITIATIVE OF:  COOK COUNTY

2017 & 2018 PROJECT TYPES AND REQUESTS

BREAKDOWN OF APPLICATIONS BY PROJECT TYPE

2017 Applications
2018 Applications

APPLICATIONS BY PROJECT TYPES



AMOUNT REQUESTED BY PROJECT TYPE



2017 & 2018 PROJECTS

64 Invest in Cook Projects



11 Transit Projects



13 Freight Projects

25 Pedestrian/Bike Projects



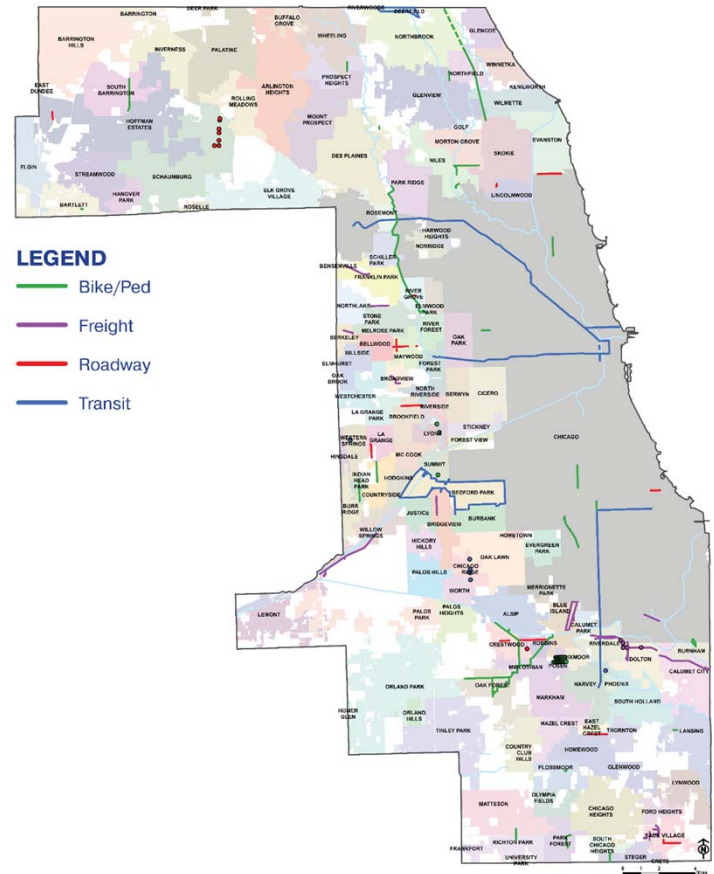
15 Roadway Projects



Over **50%** of Funds to Low- and Moderate-Income Communities
Projects in Every County District and **53** Individual Municipalities



\$14.2 Million from Invest in Cook Used to Leverage **\$34.4 Million** from Federal, State, and Local Sources

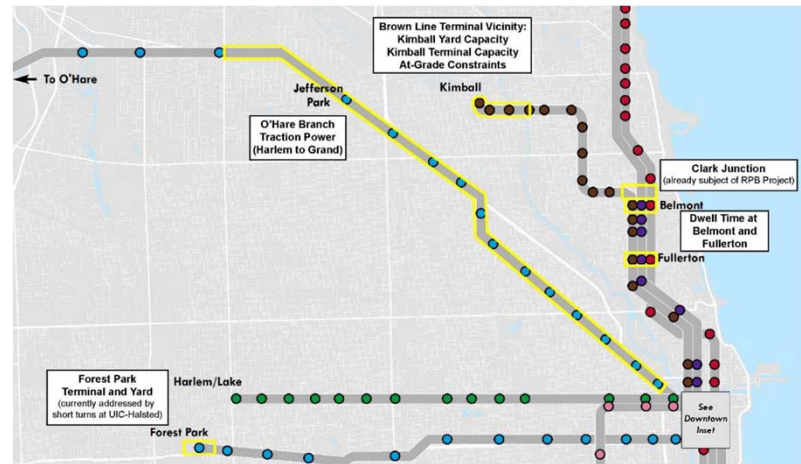


EXAMPLE PROJECTS

TRANSIT

BLUE LINE TRACTION POWER STUDY Chicago Transit Authority (CTA) \$235,000 Awarded

- Enable CTA to make strategic recommendations on critical enhancements to the Blue Line, increasing its speed, reliability, and efficiency.
- Identify improvements to increase capacity on a line that is limited its ability to provide service to meet growing demand.

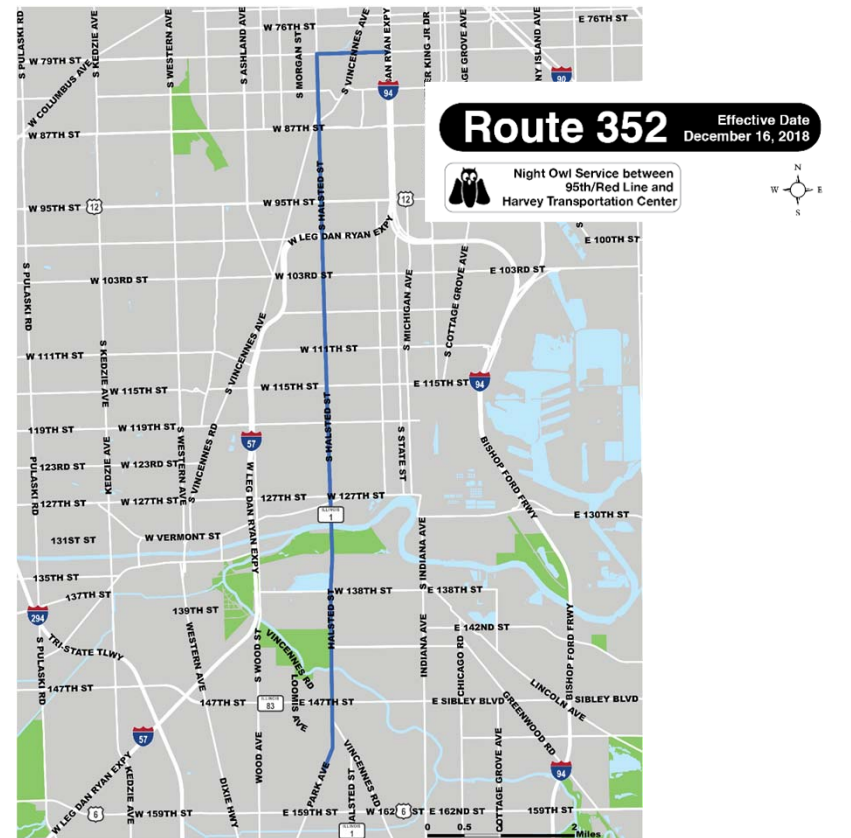


TRANSIT

SOUTH HALSTED BUS CORRIDOR

Pace Suburban Bus
\$500,000 Awarded

- Identify locations for targeted bus-priority treatments (such as Transit Signal Priority, limited stop service, and raised platforms.)
- Coordinate service improvements from the CTA Red Line 79th Street Station in Chicago to the Pace Transportation Center at 154th Street and Park Avenue in the City of Harvey.



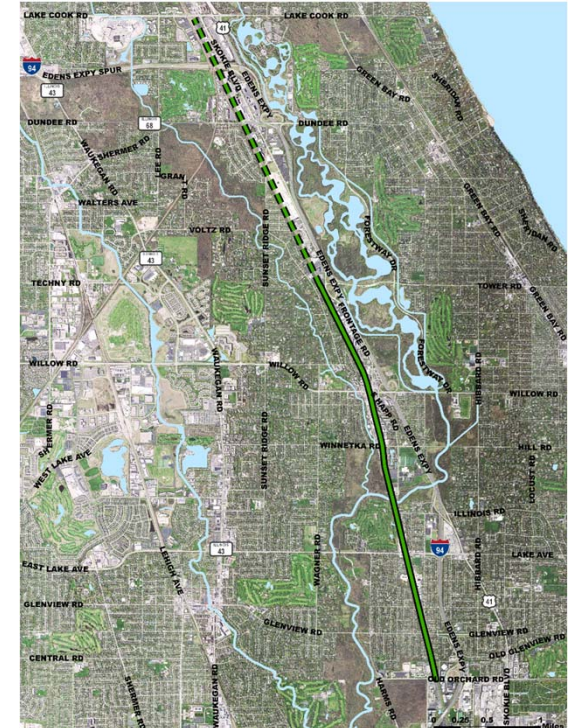
BICYCLE/PEDESTRIAN

SKOKIE VALLEY TRAIL IMPROVEMENTS

Village of Glenview

\$188,000 Awarded

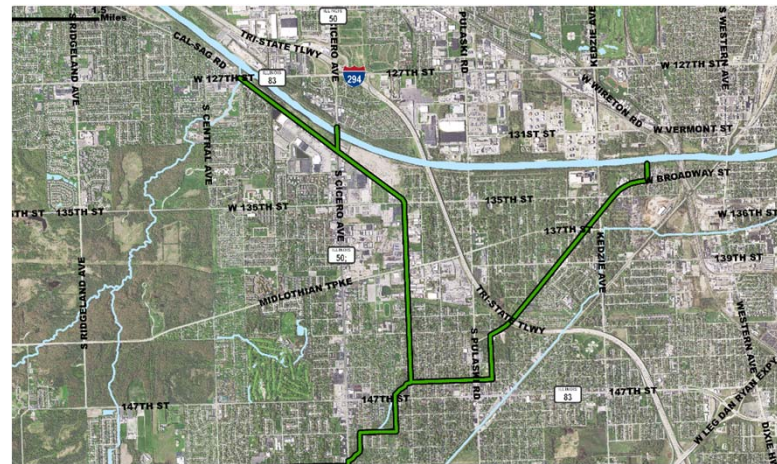
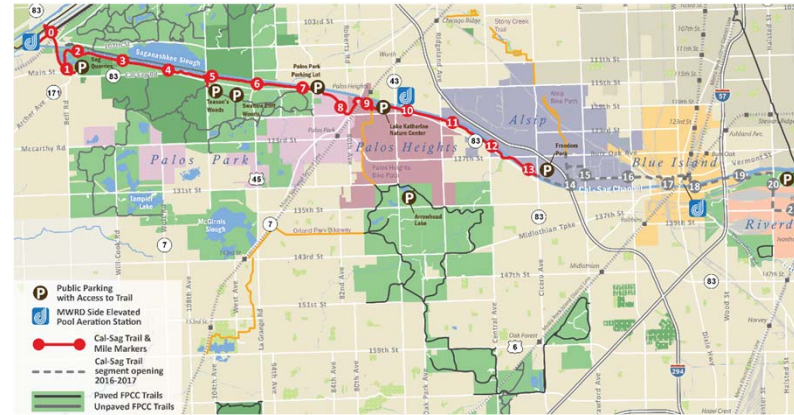
- Skokie Valley Trail is a regionally significant trail that provides bike connectivity between Lake Bluff and Chicago.
- The Villages of Glenview, Northfield and Wilmette are working together to bridge the 3.9 mile gap in the Trail.



BICYCLE/PEDESTRIAN

NATALIE CREEK TRAIL Village of Midlothian \$317,000 Awarded

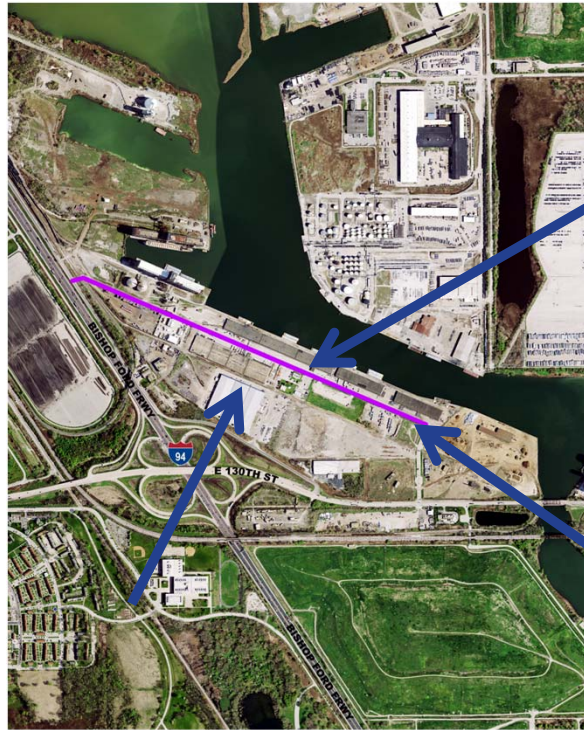
- Trail will promote transportation alternatives in South Cook County connecting 6 communities to the Cal Sag Trail.



FREIGHT

BUTLER DRIVE/STONY ISLAND AVENUE Illinois International Port District \$300,000 Awarded

- Preliminary Engineering led by Cook County on behalf of the Port District.
- Award leveraged over \$15 million from the State and City to fund all phases through construction.



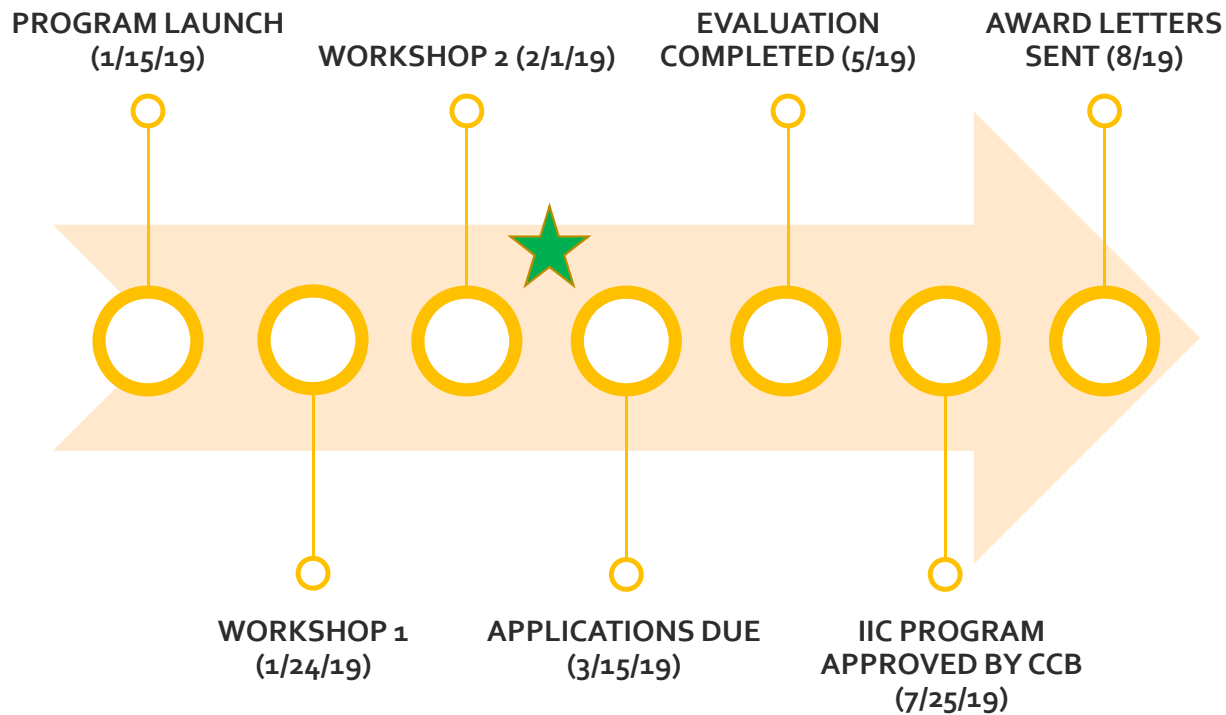
FREIGHT

FRANKLIN AVENUE Village of Franklin Park \$320,000 Awarded

- Franklin Avenue is a critical route for trucks providing access to the CP Railway's Bensenville Intermodal Facility and major industrial areas in the Village.
- With the help of Cook County and IDOT Competitive Freight Funding, the Village will advance a \$31 million reconstruction project



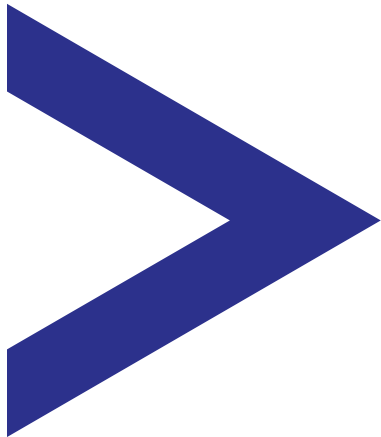
INVEST IN COOK: 2019 SCHEDULE



THANK YOU!



Department of Transportation and Highways



John Yonan, P.E

Superintendent

John.Yonan@cookcountyil.gov

312-603-1601

Jennifer (Sis) Killen, P.E, PTOE

Assistant Superintendent

Jennifer.Killen@cookcountyil.gov

312-603-1656

WWW.COOKCOUNTYIL.GOV/INVESTINCOOK