

# **Highway User Fee Funding Of Local Roads in Illinois**

**T.H.E. Conference  
University of Illinois  
February 27, 2018**

**Craig Fink, County Engineer  
Tazewell County, Illinois**



# Public Roads in Illinois

## Local Jurisdiction (Local Roads)

- County Highways
- Township/Road District Roads
- Municipal Streets

## State Jurisdiction (IDOT)

- State Highways
- US Highways
- Interstates



# **User Fees Collected by State**

## **(A Portion Returned to Roads)**

### **Motor Fuel Tax (MFT)**

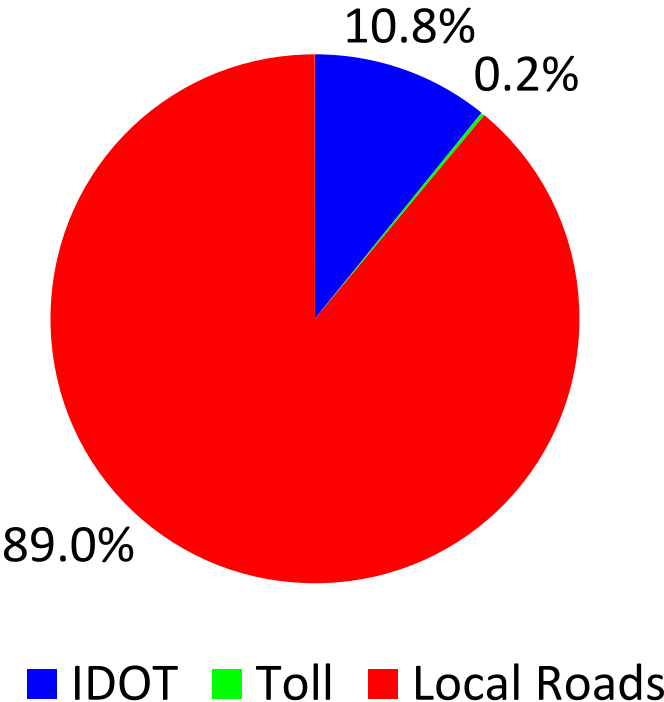
- **Paid at the Pump**

### **Motor Vehicle Revenue (MVR)**

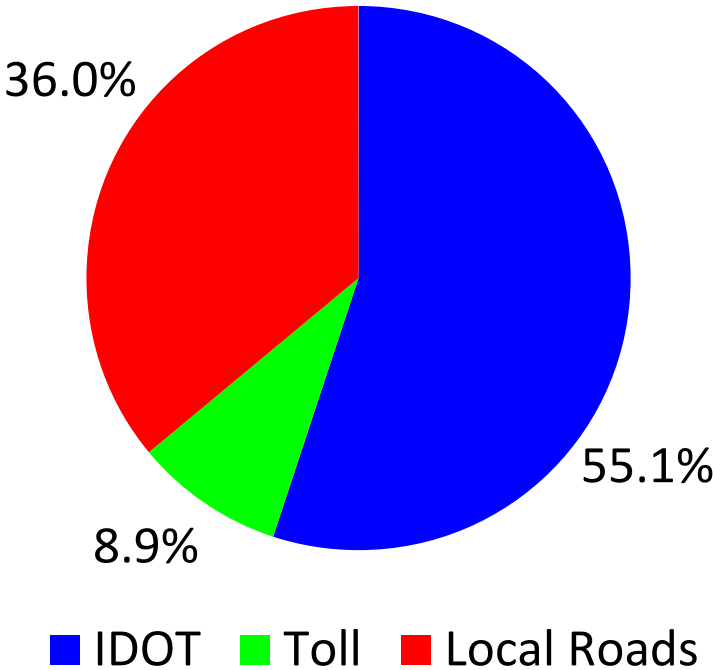
- **Paid at Secretary of State**
  - **Vehicle Registration**
  - **Driver's License**
  - **Certificates of Title**

# Illinois Highway & Street Facts 2016

### Miles of Public Road



### Vehicle Miles of Travel





# Highway User Fees Collected by State

(A Portion Returned to Roads)

## Motor Fuel Tax (MFT)

- Paid at the Pump

## Motor Vehicle Revenue (MVR)

- Paid at Secretary of State
  - Vehicle Registration
  - Driver's License
  - Certificates of Title

**VERY IMPORTANT POINT TO BE MADE.**

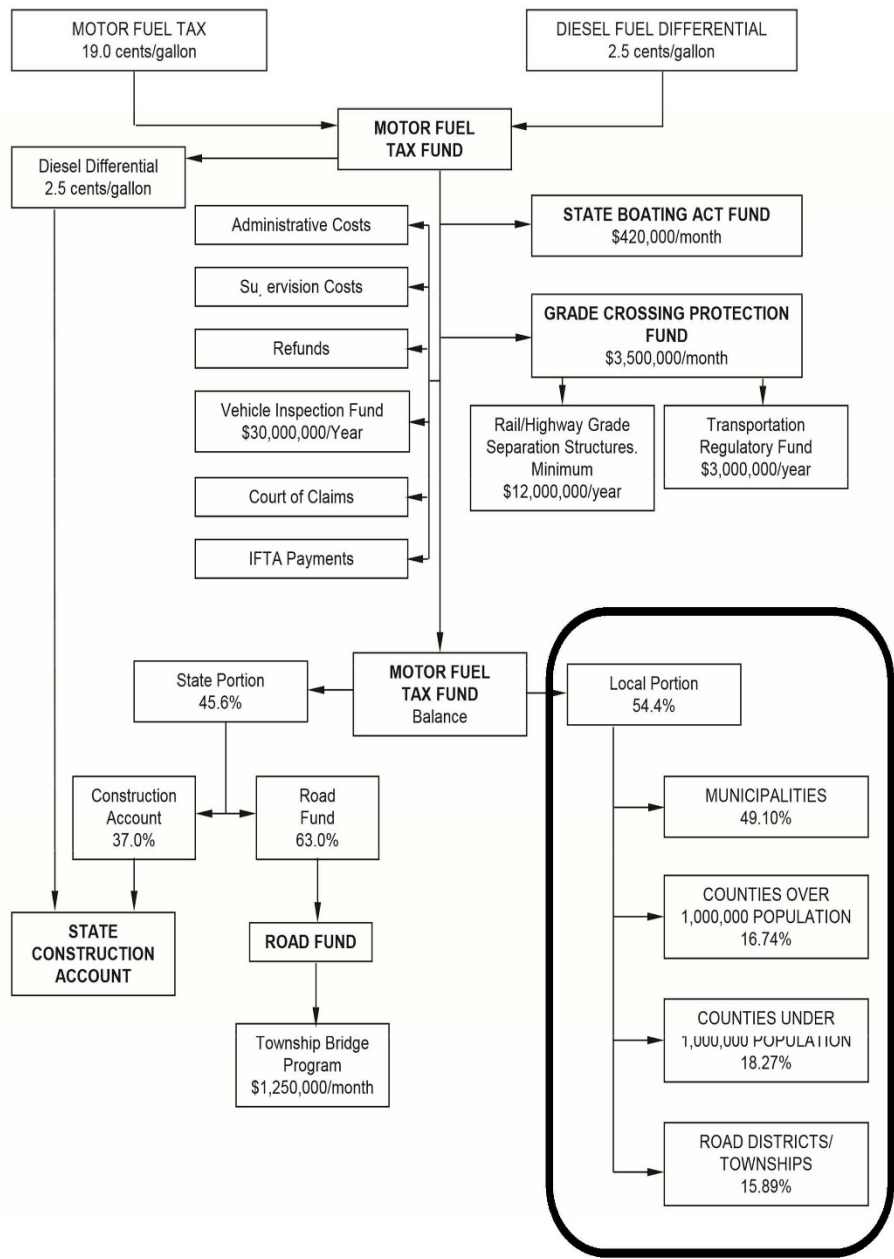
**Local Roads share directly in the revenue stream of MFT but they do NOT share directly in the MVR revenue stream.**

**In other words,**

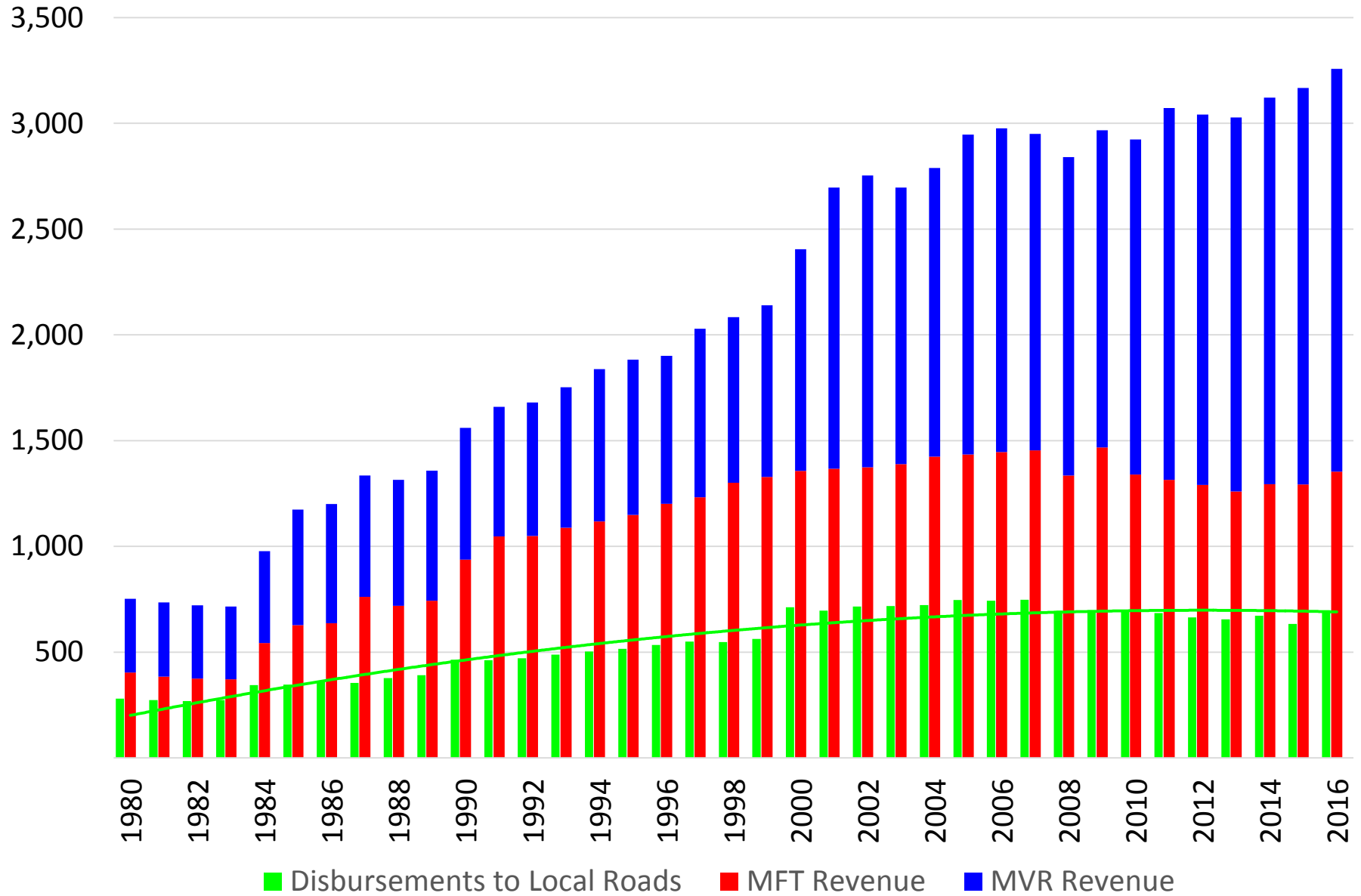
**if the MFT revenue collected by the State increases,  
Local Roads share of that revenue  
automatically increases proportionally.**

**If the MVR revenue collected by the State increases,  
Local Roads receive none of that increase.**

**DISTRIBUTION OF THE ILLINOIS MOTOR FUEL TAX FUND**



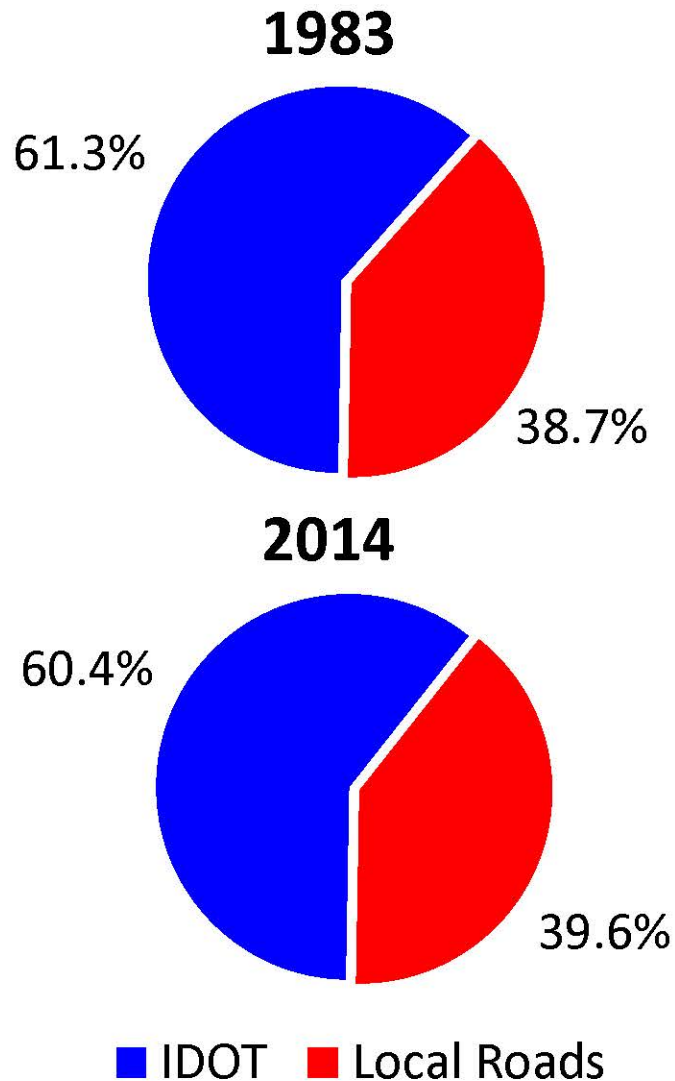
# State Collected Highway User Fees [\$ Millions]



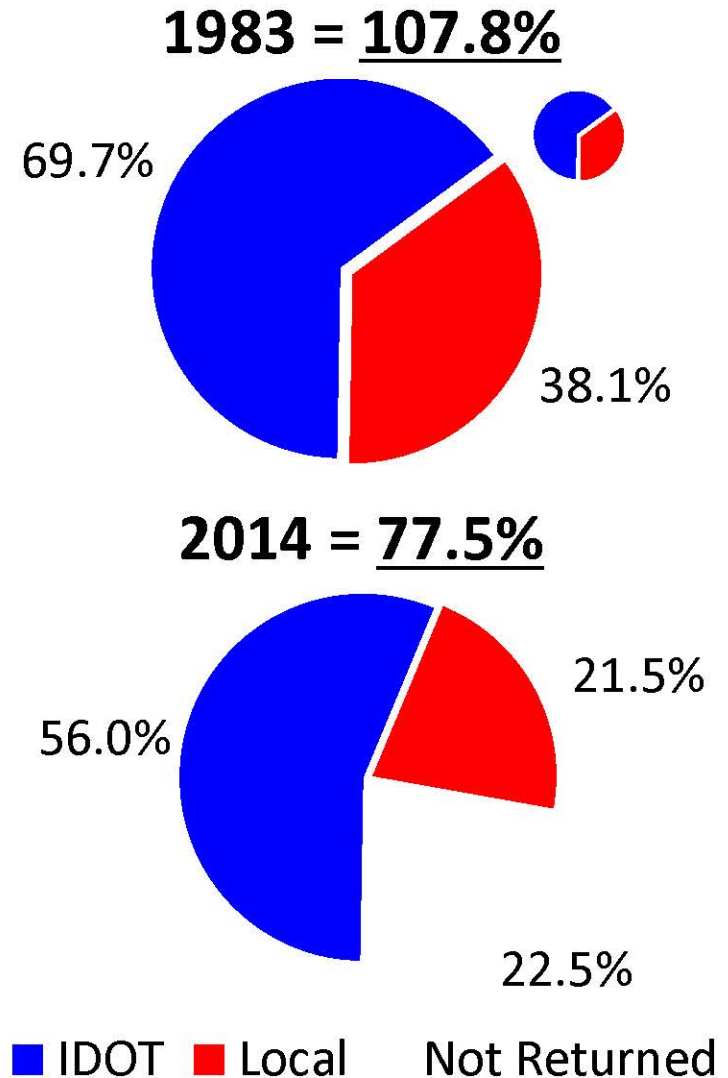


# Contribution vs Share of Revenue Stream

## Traffic Carried (VMT)

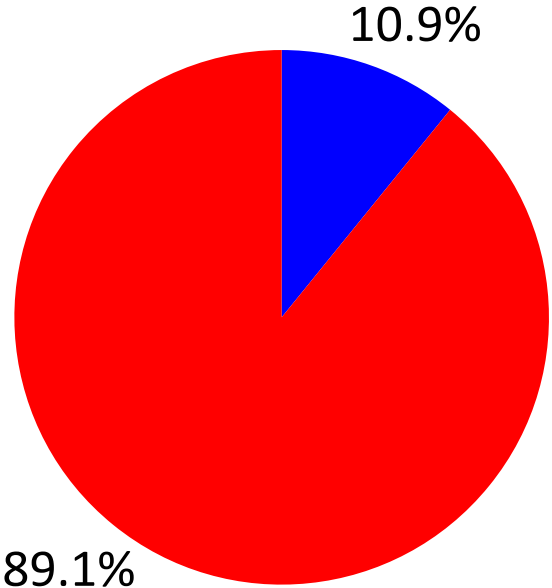


## MFT and MVR Returned To:



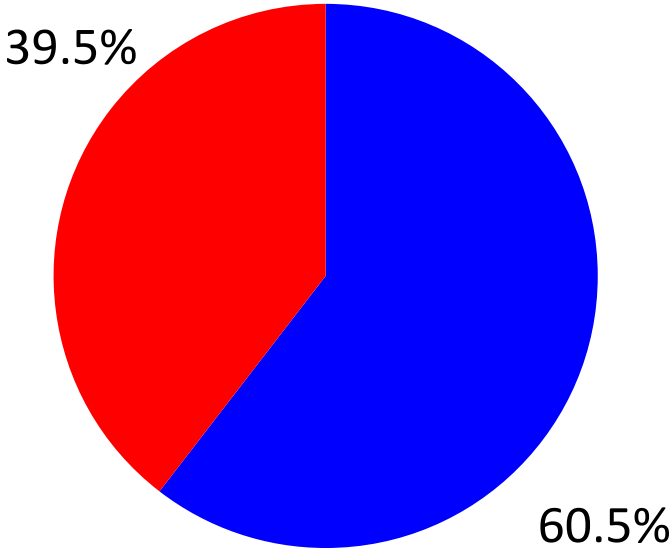
# Contribution vs Share of Revenue 2016

Miles of Public Road



■ IDOT ■ Local Roads

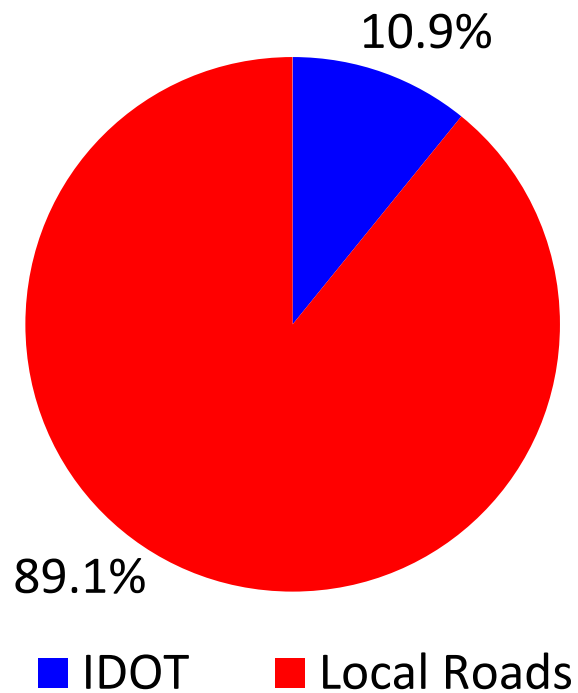
Vehicle Miles of Travel



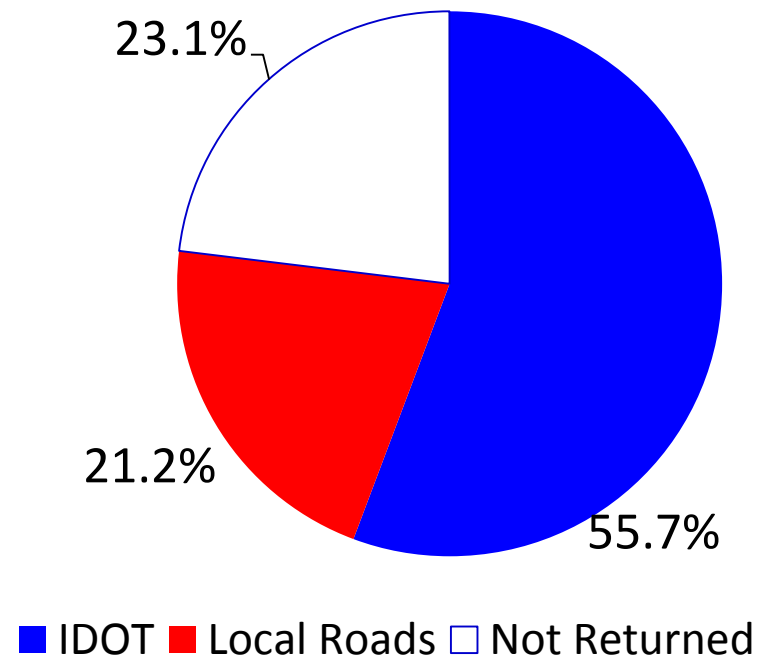
■ IDOT ■ Local Roads

# Contribution vs Share of Revenue 2016

## Miles of Public Road

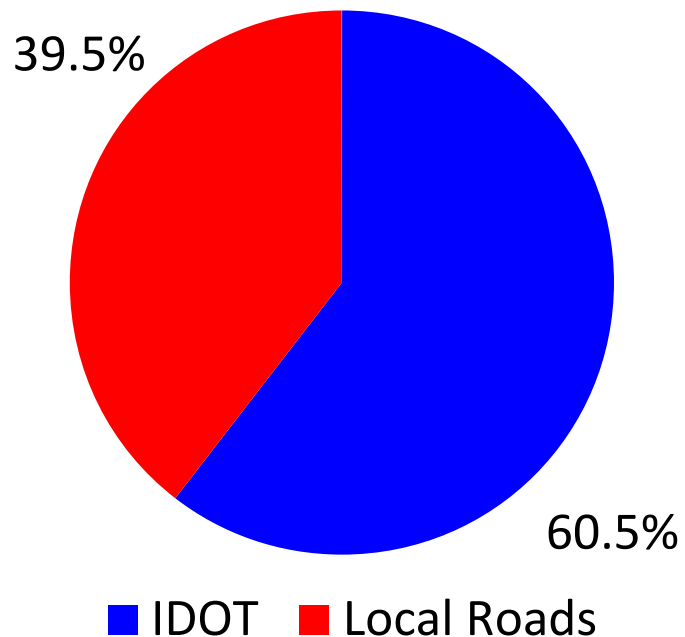


## Share of MFT and MVR Returned to Roads

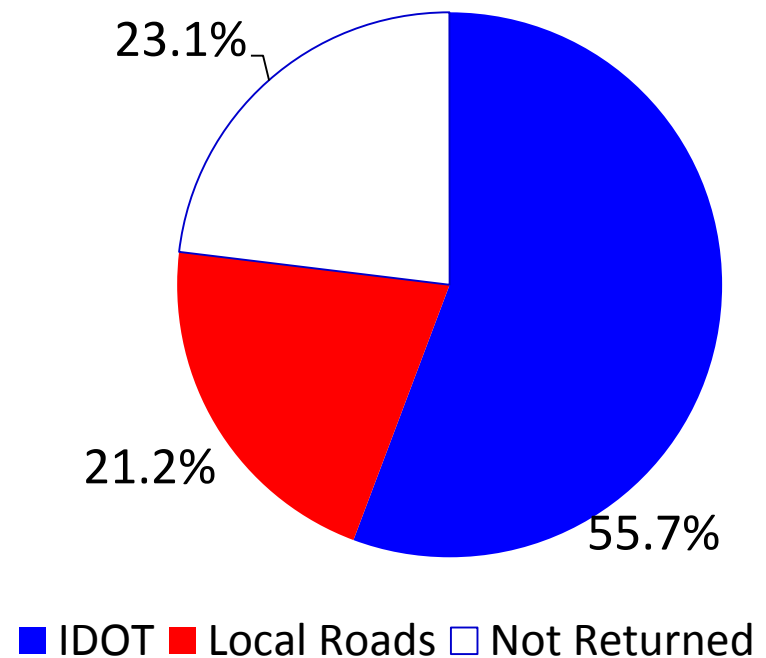


# Contribution vs Share of Revenue 2016

## Vehicle Miles of Travel



## Share of MFT and MVR Returned to Roads





**SO,**

**Local Roads:**

- **Carry 40% of the statewide traffic**
- **Generate 40% of the Highway User Fees Collected by the State**
- **Receive back only 21.2% of those fees**

**That's 53¢ for every \$1 generated!**

# HOW BIG AN IMPACT IS THAT?

In 2016 Local Roads . . .

. . . generated \$1,303 Million.

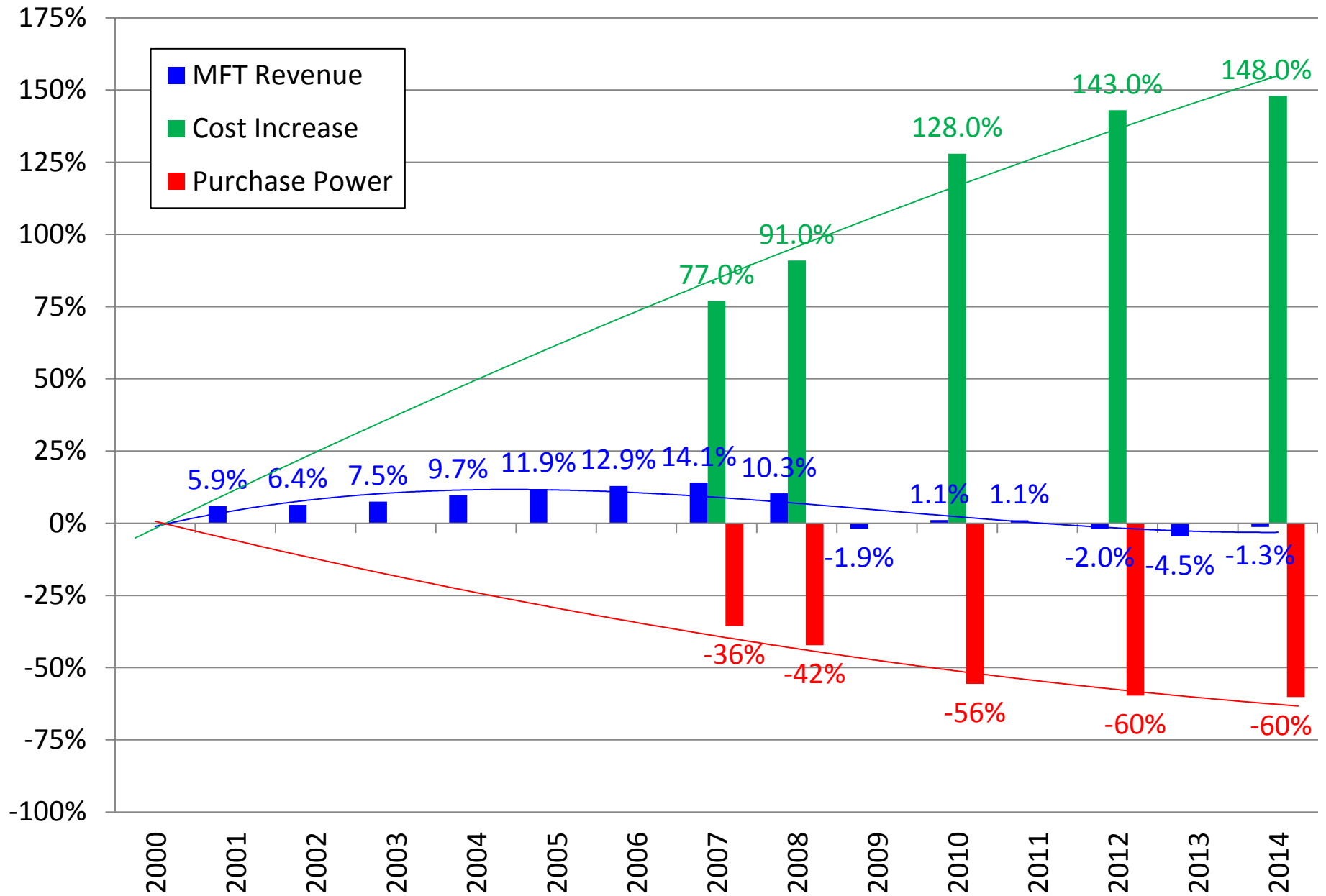
. . . received back \$691 Million. (\$575 Million in MFT distributions)

In effect, that is a

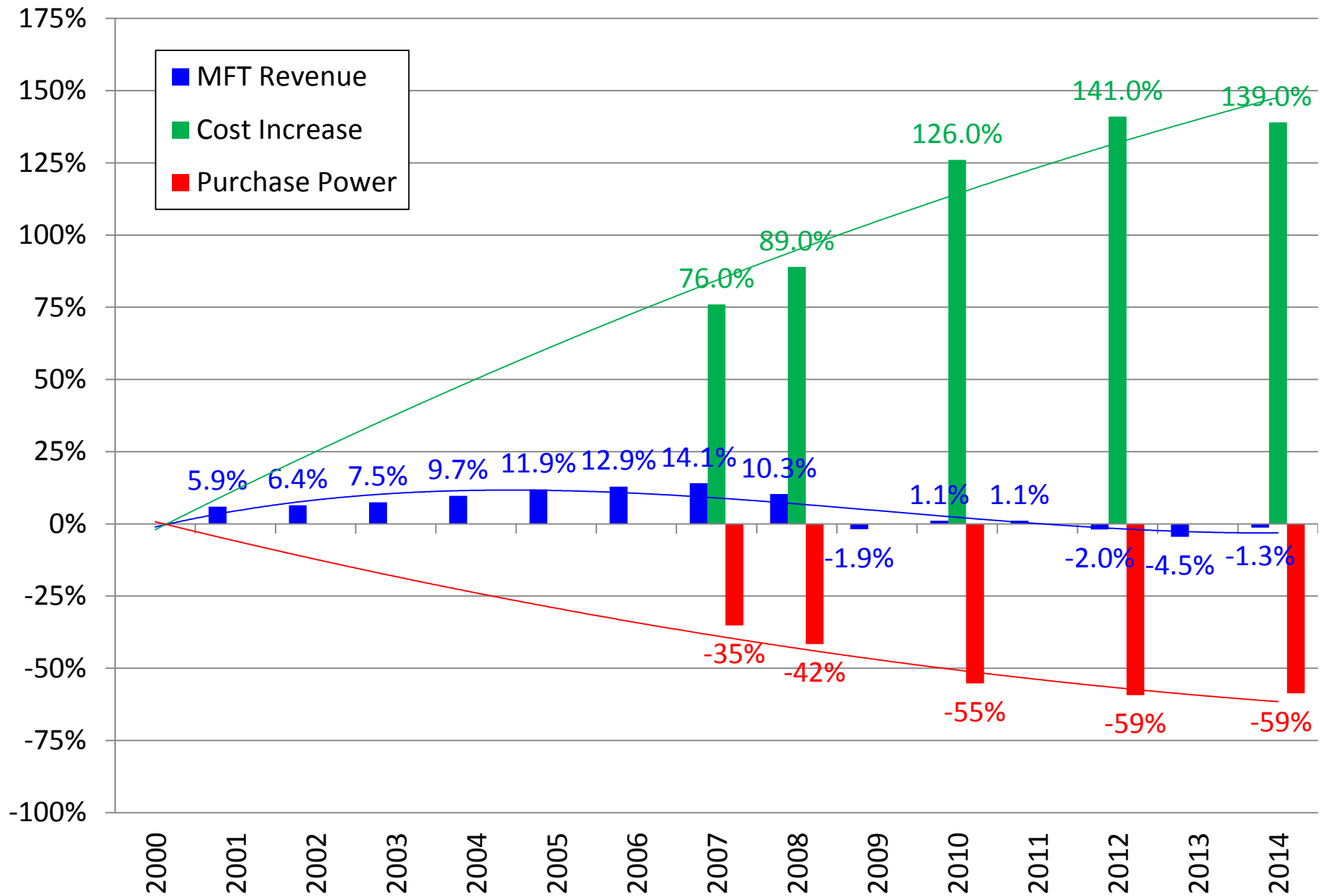
\$612 Million unfunded mandate!

(\$11.1 Billion Since 1983)

# MFT Revenue/Costs vs. Purchase Power Counties in Illinois



# MFT Revenue/Costs vs. Purchase Power Townships/Road Districts in Illinois

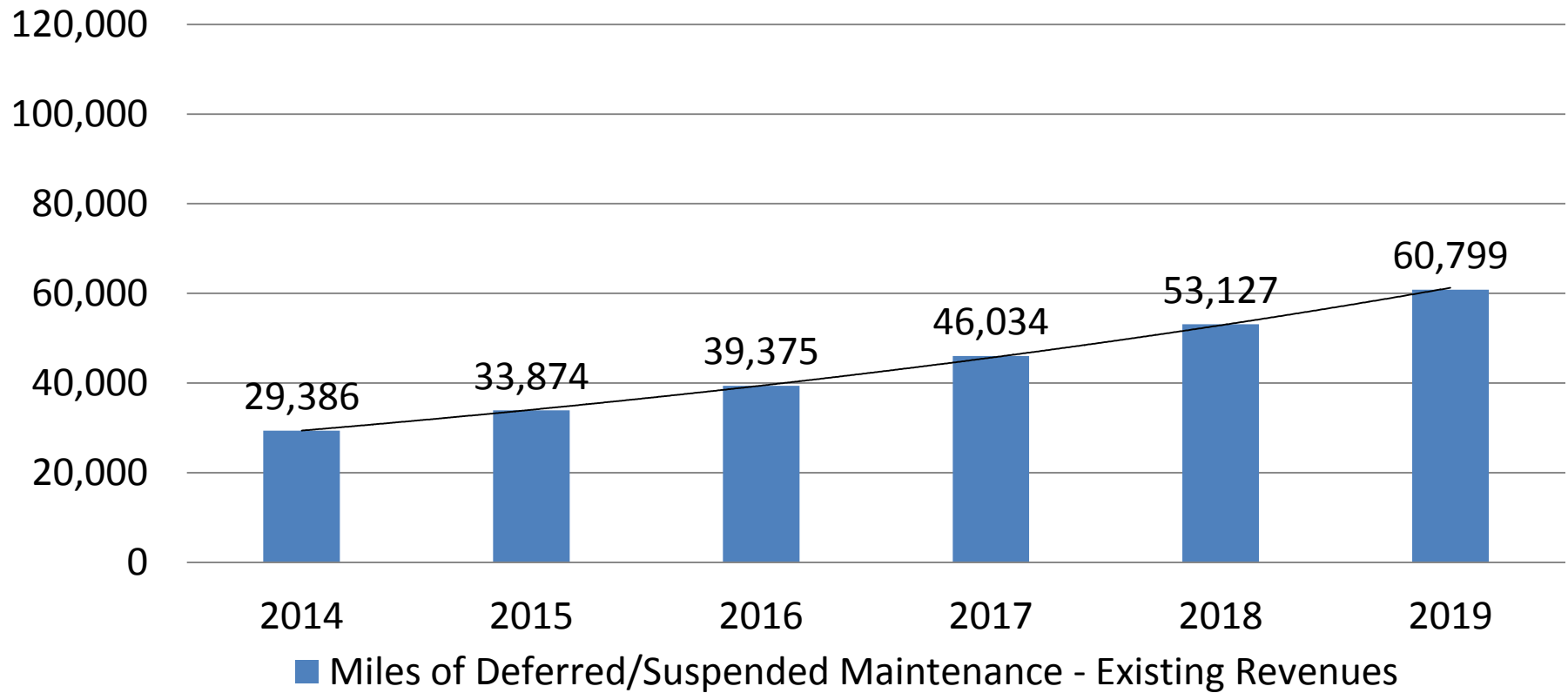




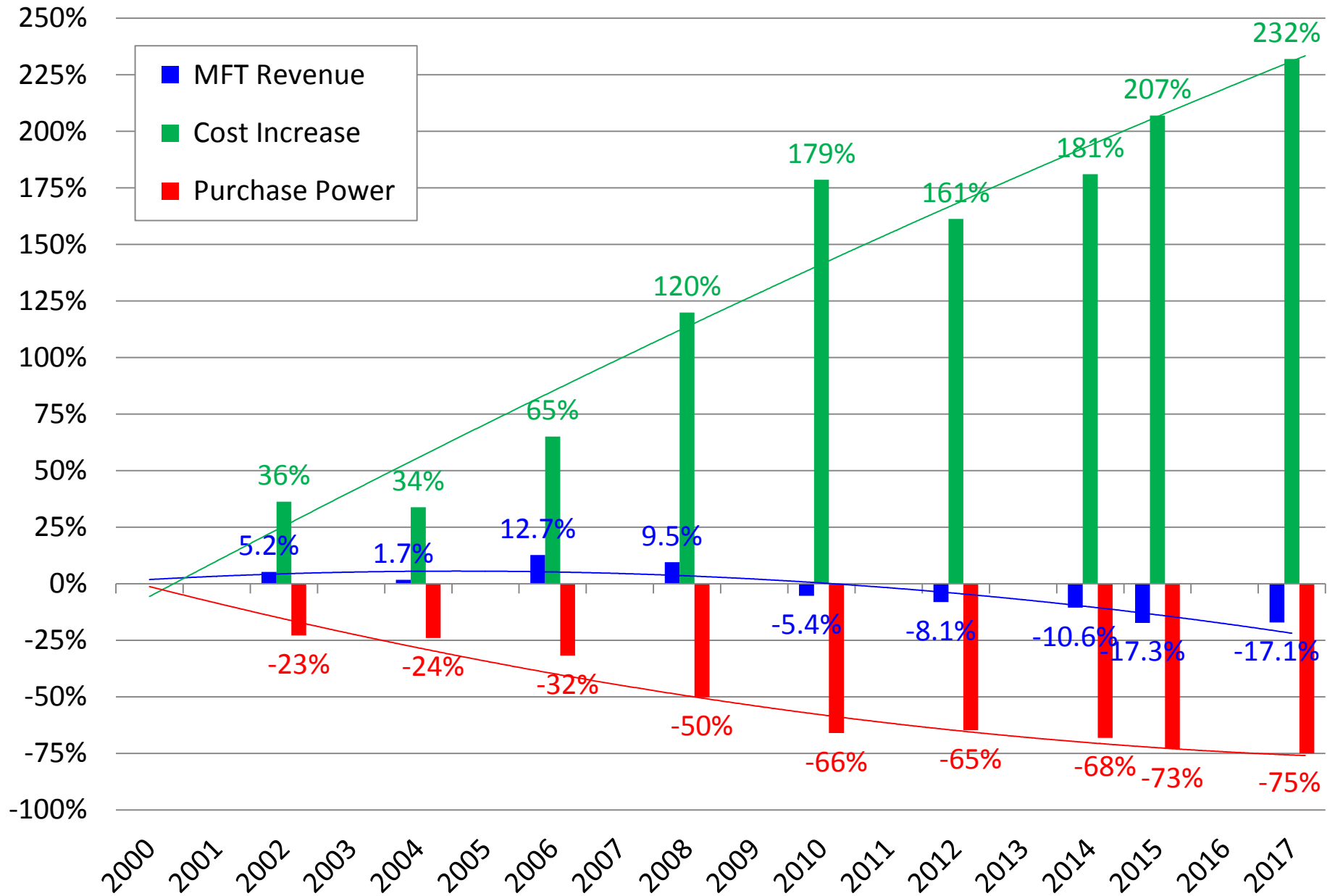
# Local Roads in Illinois

## Miles of Deferred/Suspended Preservation

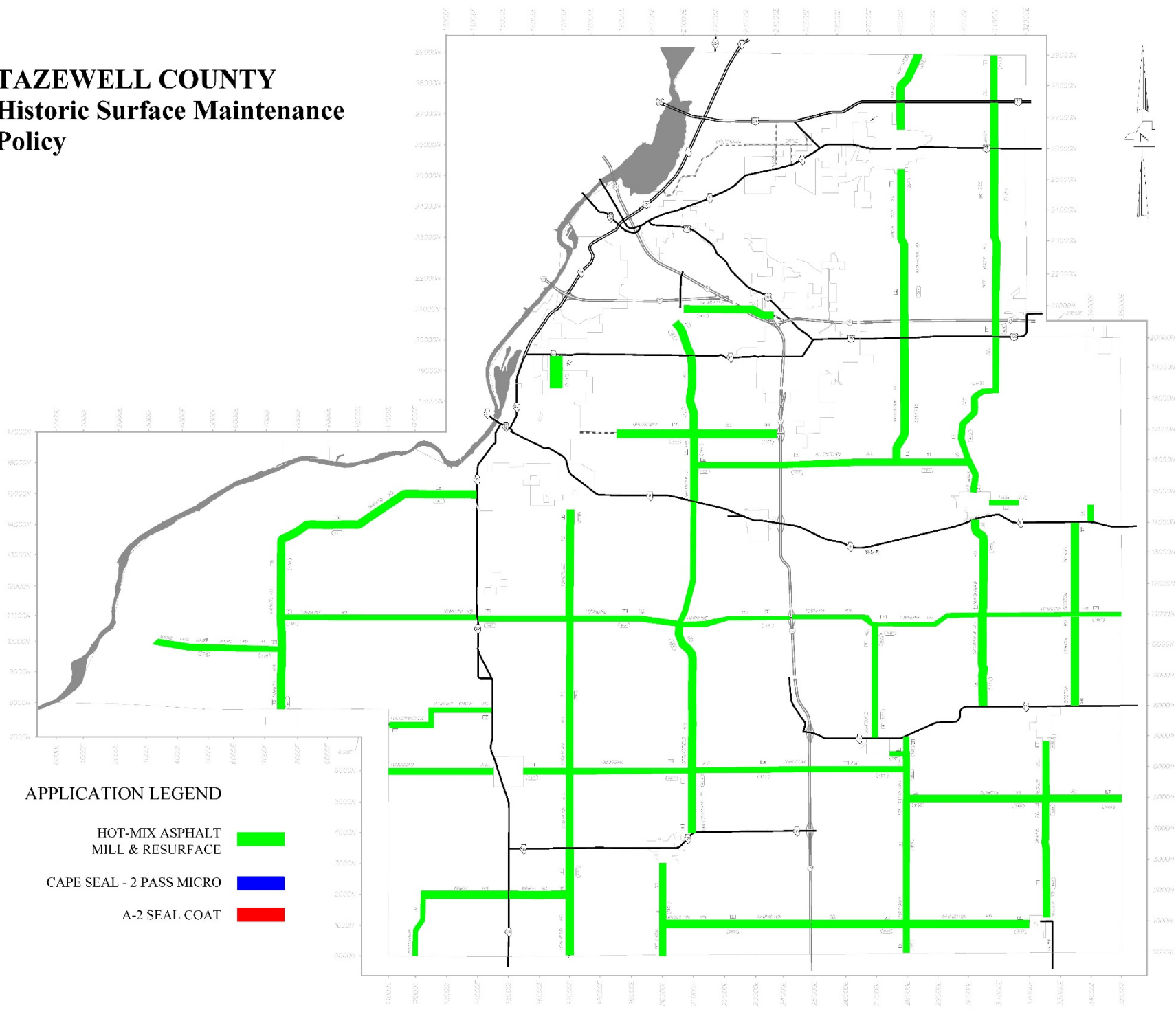
**Total Local Road Mileage = 129,054**



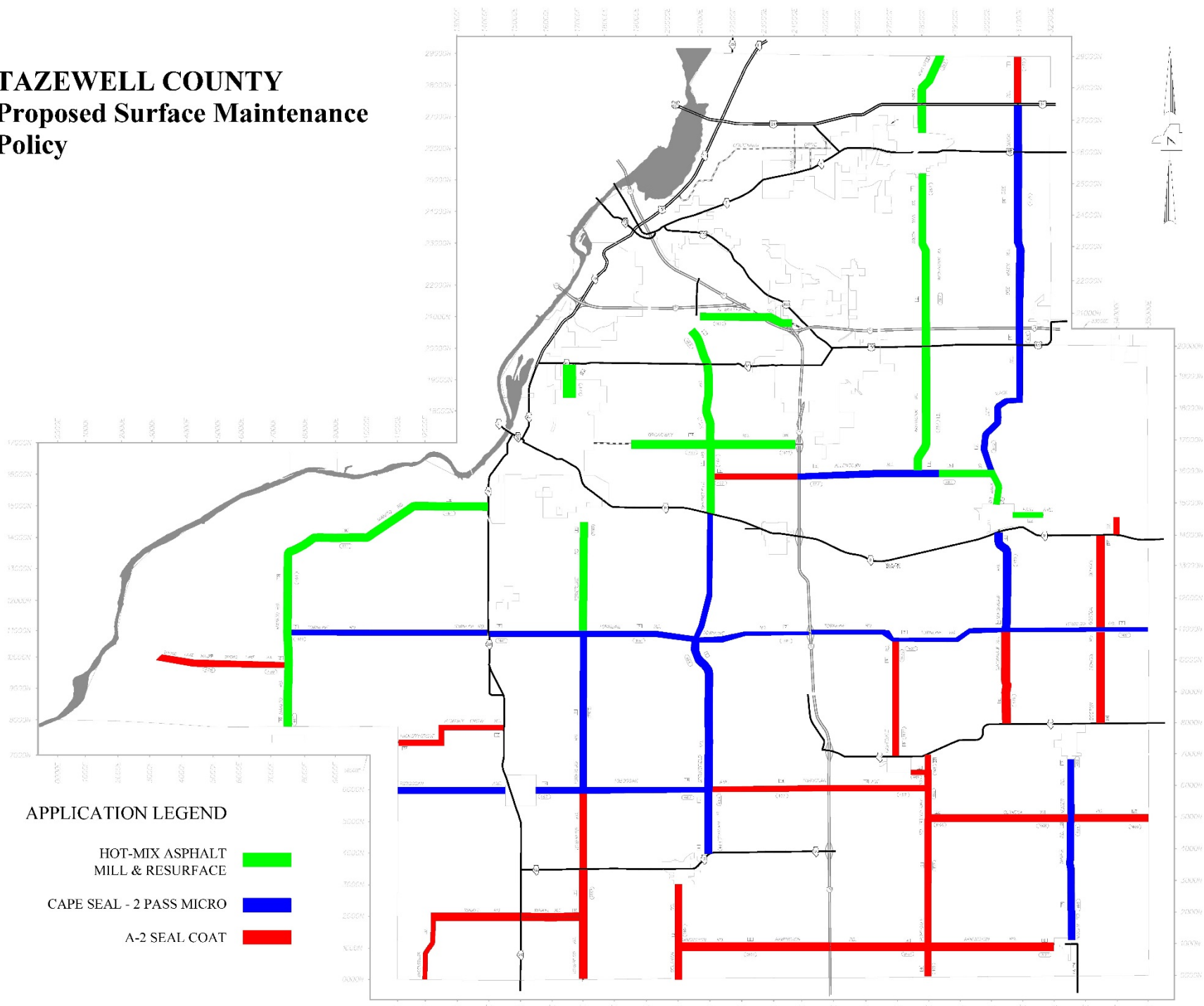
# MFT Revenue/Costs vs. Purchase Power Tazewell County, Illinois



# TAZEWELL COUNTY Historic Surface Maintenance Policy



# TAZEWELL COUNTY Proposed Surface Maintenance Policy



# **Net Effect**

**We are watching our Local Road system, particularly the rural areas, slowly degrade back to conditions from an earlier time. We're watching it slowly return to dirt and mud.**

**Since gravel is a step along the way let's learn a little bit more about that stage.**

**QUESTIONS?**

**Craig Fink, P.E.  
County Engineer  
Tazewell County, Illinois**

**Tazewell County Highway Department  
21308 IL Route 9  
Tremont, IL 61568**

**Phone: 309-925-5532  
E-Mail: [cfink@tazewell.com](mailto:cfink@tazewell.com)**